

YOU ARE CORDIALLY INVITED TO JOIN THE  
**LINCOLN CHILDREN'S ZOO**

ON A CLASSIC ADVENTURE TO  
**AUSTRALIA**

ESCORTED BY JOHN CHAPO, DIRECTOR EMERITUS

*Down Under Unveiled: The Nature & Culture of Oz*

FEBRUARY 10 TO 24, 2023



## **YOUR ZOO ESCORT ~ JOHN CHAPO, DIRECTOR EMERITUS, LINCOLN CHILDREN'S ZOO**

---

John Chapo has over 45 years of professional Zoo experience, over 40 as a director. He started out in the zoo world as a 15-year-old volunteer at the Potawatomi Zoo in South Bend Indiana and worked his way to the top in 11 years, becoming zoo director at age 26. John has worked at the Lincoln Children's Zoo for 35 years. John has traveled extensively in Africa, India and South America. His first trip was to Africa in 1989, and in his words he "Immediately fell in love with Africa and international travel". John is past Chair of the Nebraska Tourism Commission and also serves on the AZA Government Affairs Committee and is an AZA Accreditation Inspector.





## YOUR ITINERARY

---

### DAYS 1/2~FRIDAY/SATURDAY~ FEBRUARY 10/11

#### LINCOLN/EN ROUTE

Your journey begins as you board your flight in Lincoln, connecting to Australia at the Los Angeles International Airport. En route, you will cross the International Date Line and lose a day. (Meals Aloft)

### DAY 3~SUNDAY~ FEBRUARY 12

#### CAIRNS/PORT DOUGLAS

Today you arrive in Cairns, Queensland's northernmost city, where you are met and transferred to your hotel located in Port Douglas, a scenic one-hour drive north of Cairns via one of Australia's most spectacular coastal roads following along the beaches of the Coral Sea. The rest of the day is at leisure.

*Your home for the next three nights will be Thala Beach Nature Reserve, a private and tranquil resort, located between Cairns and Port Douglas in close proximity to The Great Barrier Reef – a deluxe Australian eco retreat with its own secluded beach frontage of approximately 1.2 miles of pristine sand. Coconut palms and coastal sheoak trees line the coast at Thala Beach Nature Reserve, and all guests enjoy private access to both Oak Beach and Pebbly Beach.*



*You'll stay at a Eucalypt Bungalow which allows you to intimately experience the unique tropical forest in supreme comfort and privacy. These are individually positioned and border Thala's pathways as they gently rise up the headland through the lush Eucalyptus Forest. All guestrooms include comforts such as air conditioning, in addition to amenities like safes, minibars, HDTVs with digital channels and DVD players, furnished balconies or patios, refrigerators, and coffee/tea makers. Bathrooms with separate tubs/showers and free toiletries. Indulge in a sports massage, a body scrub, and reflexology at Rejuvenate, the onsite spa. Osprey's Restaurant, the onsite restaurant, features ocean views and light fare. Free Wi-fi.*

Tonight, meet your fellow travelers over a festive dinner.

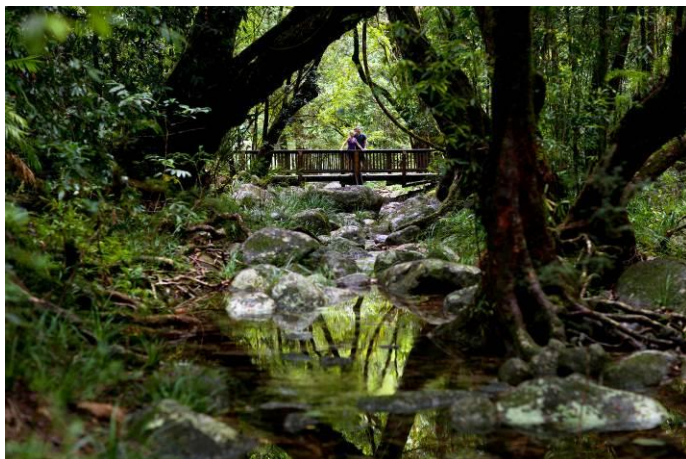
Overnight at the THALA BEACH NATURE RESERVE, in Eucalypt Bungalow. (Meals Aloft, D)

<https://www.thalabeach.com.au>

### DAY 4~MONDAY~FEBRUARY 13

#### DAINTREE RAINFOREST NATIONAL PARK/CAPE TRIBULATION

Meet with your naturalist guide and drive north to the Daintree River along the scenic Mossman route past lush farmlands and seascapes. Daintree National Park is situated on the east coast of Far North Queensland. This area was granted international protection through its addition in 1988 to the Wilderness World Heritage list. The rainforest is believed to be the oldest surviving in the world. There continues to be species of the earliest flowering trees which first appeared over 100 million years ago when dinosaurs ruled the land.





Enjoy a short tea break and embark on a discovery river cruise to search for the abundant wildlife including tree kangaroos, flying foxes, cassowaries, dragon lizards, salt water crocodiles, tree frogs, giant birdwing butterflies and countless species of trees, ferns and fungi. There are over 455 bird species alone, including the Great-Billed Herons, Black Bitterns and Little Kingfishers. Your guide will point out the numerous plants and animals surrounding you throughout the cruise.

With special access at a private rainforest property, enjoy a short walk along a delightful rainforest creek before a delicious tropical lunch. Walk on this world-renowned rainforest beach and admire the coastline and fringing coral reef from the Kulki Lookout.



Stop for an afternoon refreshment included at the Daintree Ice Cream Company. Enjoy a delicious exotic fruit ice cream cup featuring four flavors (gluten free and dairy free options are available.)

Visit the Mossman Gorge Gateway Centre and enjoy an indigenous presentation by the traditional owners of the gorge, the Kuku Yalanji people, before boarding your eco shuttle for the transfer into Mossman Gorge. Your driver/guide will take you for a guided walk, sharing their knowledge of this enchanting rainforest environment. Learn about the fascinating secrets of one of the world's oldest rainforests.

Overnight at the THALA BEACH NATURE RESERVE. (B,L,D)

## **DAY 5~TUESDAY~FEBRUARY 14**

### **GREAT BARRIER REEF/CAIRNS**

After breakfast, you'll be transferred to the nearby marina to board your vessel, an ultra-modern, high speed luxury catamaran for a day of exploration of the Great Barrier Reef. Your journey begins from the mangrove-lined Trinity inlet, and then moves across the open ocean, past Green Island, and through the various reefs of the Great Barrier Reef. This 1,260-mile coral reef is the world's largest living organism and is visible from outer space. The reef is incredibly big – it is greater in area than the United Kingdom and longer than the west coast of the U.S.A. It is also incredibly diverse – containing at least 1,500 species of fish, 350 types of hard coral and 5,000 varieties of mollusks. In addition, six of the world's seven species of marine turtle live here. The reef is also home to thousands of invertebrates and diverse birdlife, ranging from screeching Sooty Terns to Common Noddies. This remarkable scene has been formed by millions



of miniscule cells that continue to multiply, creating coral of every shape, color and size – including elkhorn, sea fans and brain coral. Like a huge serpent, it winds toward and away from the Queensland coastline, at some points only a few miles from the mainland, at others almost 200 miles away. Together, 2,600 coral reefs and about 320 coral islands make up the Great Barrier Reef; fringing, ribbon, and patch reefs, lagoons, cays, and continental islands combine to form the full complex.







Your luxury sailing catamaran moors in the sheltered blue lagoon for over 5 hours, offers a wide range of activities including swimming and snorkeling, guided snorkel tours by a marine naturalist, a heritage walk on the island and guided glass bottom boat tours. A delicious buffet lunch including seafood is served on board. Later enjoy the exhilarating sail back to Port Douglas.

*Morning and afternoon tea and coffee including homemade cakes are available on the cruise. All snorkeling equipment, optical masks and tuition provided, seasonal lycra snorkeling suits and flotation devices are available as well as hot and cold fresh water showers. Bring a towel, sunhat, sunscreen, camera and a happy disposition!*

Return to Port Douglas in the afternoon after an exhilarating day at the Barrier Reef.  
Overnight at the THALA BEACH RESORT. (B,L,D)

#### **DAY 6~WEDNESDAY~FEBRUARY 15**

##### **HARTLEYS CROCODILE ADVENTURES, KURANDA & SKY TRAIL/CAIRNS**

Enjoy a full day at Hartleys Crocodile Park, Kuranda and Skyrail.

Located just 25 minutes south of Port Douglas, Hartley's Crocodile Adventures is simply the best place to see crocodiles and local wildlife in their natural environment. Join a fully escorted private guided tour with an experienced wildlife keeper. See some of the largest crocodiles being pole fed, meet the gorgeous koalas, see and feed wallabies, kangaroos and quolls. You will also be introduced to a diverse collection of lizards and snakes plus view the display in the Gallery of Living Art. Enjoy a delicious barbeque lunch.





After lunch, transfer to Kuranda village. On arrival in Kuranda, there is free time to explore the "Village in the Rainforest" and its many attractions, including the Heritage Markets which operate daily. Other attractions you may wish to visit are Birdworld, the Australian Butterfly Sanctuary or Kuranda Koala Gardens (*own expense*).

Afterward, board the Skyrail Rainforest Cableway over pristine rainforest just meters above the Rainforest canopy stopping along the way to take a stroll or visit the CSIRO Interpretive Centre. Rejoin your coach transfer and check into your hotel in Cairns.

*Located on the waterfront, Hilton Cairns is in the central business district, a walkable area in Cairns with great shopping. The hotel has 263 individually-furnished, air-conditioned rooms, which are accessible via exterior corridors. Rooms open to balconies. Bathrooms include shower/tub combinations, bathrobes, slippers, hair dryers and designer toiletries. This Cairns hotel provides wireless Internet access for a surcharge. Recreational amenities at the hotel include an outdoor pool and a 24-hour health club.*

Overnight at the HILTON CAIRNS HOTEL. (B,L,D)

<https://www.hilton.com/en/hotels/crnhitw-hilton-cairns>

#### **DAY 7~THURSDAY~ FEBRUARY 16**

##### **CAIRNS/SYDNEY**

Board your flight to Sydney, which with a population of close to 4 million inhabitants, is Australia's largest and most cosmopolitan city, with one of the world's most beautiful harbors, offering numerous attractions.

Departing the airport commence an orientation tour on the way into the city; stop at Sydney's most famous beach, Bondi Beach, take a stroll down the esplanade with the locals and maybe enjoy an ice cream while soaking up the atmosphere! Then travel via the vibrant Oxford Street and the suburb of Paddington; admire this boutique precinct and the charming Georgian and Victorian architecture of the homes. You will pass Hyde Park, St. Mary's Cathedral then along Macquarie Street, Sydney's most significant historical and cultural stretch passing Hyde Park Barracks, Mint Building, Parliament House, Sydney Hospital and State Library. See the Opera House, Sydney harbour Bridge before arriving at your hotel.

Tonight, enjoy dinner at Nick's Seafood Restaurant.





*Your home for the next three nights, the Parkroyal Darling Harbour, is located on the city-side of Darling Harbour. The hotel has 340 spacious guest rooms, which offer wonderful views of either Darling Harbour or the stunning city skyline. Just a short walk from the major entertainment and shopping districts including Pitt Street Mall, the historic Queen Victoria Building, Chinatown and Darling Harbour, it's the perfect base from which to explore all this exciting city has to offer.*

Overnight at THE PARKROYAL DARLING HARBOUR HOTEL.  
(B,D)

<https://www.panpacific.com/en/hotels-and-resorts/pr-darling-harbour-sydney.html>



### **DAY 8~FRIDAY~FEBRUARY 17** **SYDNEY~ HARBOUR CRUISE**

A hearty breakfast awaits you before you transfer to Circular Quay to board your morning cruise. See all of the main harbor attractions such as the Sydney Opera House, the Harbour Bridge and Fort Denison, along with magnificent waterfront homes, parks, beaches and marinas that show Sydney life at its best. Enjoy a light morning tea while cruising on one of the world's most spectacular harbors. This is by far the most comprehensive sightseeing cruise on Sydney Harbour.

After lunch, join your Rocks Dreaming Aboriginal Tour. Be touched by the most ancient human culture on earth in a 90-minute leisurely walkabout with an Aboriginal guide in the Rocks, and journey into dream time, the culture of Aboriginal People. Get inspired as you discover the oldest ecology, conservation, sustainability, astrology and spiritual beliefs on earth today. Connect with Australian skies, lands and waters, and the experiences of 'always walking Country'.



The tour gives you the opportunity to discover how the ancient Aboriginal Dreamtime is still alive within the modern Sydney landscape and how the billion-year-old harbour, marine environment, sandstone strata, waterways, flora and fauna continue to influence how Aboriginal people live today. Tour highlights include knowledgeable Aboriginal guides, participate in a cultural acknowledgement with ochre (traditional paint), opportunity to handle cultural objects and materials, hear and learn some of the language spoken by the Cadigal people, understanding the connection between modern Sydney and the Aboriginal dreaming.



Have the remainder of the afternoon at leisure. Aussies are genuinely friendly and welcoming people, and walking around and experiencing Sydney on your own is fun, safe, and a wonderful way to discover its charms.

Overnight at THE PARK ROYAL DARLING HARBOUR HOTEL. (B,L)

## DAY 9~SATURDAY~ FEBRUARY 18

### SYDNEY~TARONGA ZOO

Today board your motorcoach, crossing the Sydney Harbour Bridge and arriving at the Taronga Zoo for your walkabout tour. With your expert guide, visit the kangaroos, koalas, wombats, dingoes, echidnas and Australian birds. Also experience the "Creatures of the Wollemi" exhibit, which recreates the wonder of a Blue Mountains sandstone gorge where you can see over 40 species of Australian animals and the recently discovered 'dinosaur tree', the Wollemi Pine.

The Zoo houses more than 3,000 animals from all over the world as well as those indigenous to Australia and is spectacular in many aspects. You will discover the platypus exhibit, Tasmanian devils, elephants, seals, orangutans, chimpanzees, giraffes and let's not forget the loveable koalas. The Zoo also features a reversed daylight house, in which small and rare nocturnal Australian animals may be seen during the day. In addition to the animal splendors, the Zoo's location is a major attraction. It is nestled into bush land surrounding Sydney Harbor, commanding majestic views of the city, Opera House and Harbour Bridge. You will also enjoy an adventure on the Zoo's Sky Safari cable car which provides fantastic views of the Zoo, Sydney Harbour and the city's skyline.

Afterward, discover the stories, history and magic of Sydney Opera House with an incredible guided tour taking you underneath the world-famous sails. Designed by the Danish architect Jørn Utzon, the Sydney Opera House was 13 years in the making because of differences between Utzon and the Australian government. Experience this miracle of architecture and engineering. A work of art that comes into existence against impossible odds – to become one of the busiest performing arts centers in the world.



*Important Information: The Sydney Opera House Tour includes up to 200 steps. Flat, enclosed rubber soled shoes must be worn. While on a tour, all bags larger than an A4 size will need to be cloaked (at the Opera House Guide's discretion). A complimentary, secure cloaking facility is located at the Cloak Room Desk on the Lower Concourse.*

### **Optional Opera House show (\$TBA at an additional cost)**

*One of the best ways to experience the Sydney Opera House is to see a show. Don't be fooled by the name –the Sydney Opera House is not just for operas, it is the pinnacle of entertainment and hosts some of the biggest names in music, theatre and comedy.*

*Note: Opera performances and schedules are subject to change and will be supplied closer to departure time.*

**Overnight at THE PARK ROYAL DARLING HARBOUR HOTEL. (B)**



## DAY 10~SUNDAY~ FEBRUARY 19

### SYDNEY/HOBART/FREYCINET

Transfer to the airport for your flight to Hobart the capital of Tasmania, which was first settled in 1804. Separated from mainland Australia by the 149 mile stretch of Bass Strait, Tasmania is a land apart – a place of wild and beautiful landscapes, friendly, welcoming people, a pleasant, temperate climate, wonderful wine and food, a rich history, and a relaxed island lifestyle. Tasmania has one of the most dramatic landscapes to be seen in Australia. Etched from rock squeezed between Antarctica and Australia, the island seems to vault out of the surrounding icy waters on pillars of erosion-resistant dolerite stone.

Upon arrival you will be met and transferred up the east coast to Freycinet National Park and your stunning accommodation.

This evening, you'll be transferred to Bicheno, a busy crayfishing and abalone port. It is the place where you watch the nightly ritual of the fairy penguins, the smallest of their species. Their streamlined shape and efficient flippers allow them extraordinary dexterity to seek prey in shallow waters during short dives. Most fairy penguins return to their colony and burrows at dusk every night, gathering in the surf and emitting bass rumblings or trumpeting cries as they call to each other.



*Your wilderness accommodations will be Freycinet Lodge. Modern, well-appointed cabins nestle secluded in a bush land setting while close, the lodge provides the perfect location to explore some of the finest recreational and outdoor pursuits in the state. It's a place to relax and rejuvenate, to experience nature's wild harmony without sacrificing your creature comforts. Stylish yet simple, the cabins are designed to impart welcoming familiarity and warmth without the intrusion of telephones or television.*

Overnight at the FREYCINET LODGE in deluxe spa cabins. (B,D)

<https://www.freycinetlodge.com.au/>

## DAY 11~MONDAY~ FEBRUARY 20

### FREYCINET, COLES BAY~ CRUISE

Experience the tranquility of Tasmania's Freycinet Peninsula on a journey that will refresh and revitalize your senses. The Wineglass Bay cruise (*scheduled cruise*) transports you from the gentle coves of Coles Bay along the Freycinet coast to one of the world's best beaches at Wineglass Bay. Cruise along Freycinet Peninsula admiring its sea cliffs and forests, tracks and beaches with the Hazard Range dotting the horizon. Graceful dolphins may accompany you on your way to the southern tip of Freycinet National Park. Soon, the craggy outline of Schouten Island and Taillefer Rocks can be seen – an uninhabited stretch of land nestled within secluded bays and lined with orange lichen boulders. Watch for colonies of playful Australian fur seals lazing in the sun – it is the world's fourth rarest seal species. Hunted to the brink of extinction in the last century, the population has been slow to recover. The most common seal in Tasmanian waters, it breeds on small isolated rocks in the Bass Strait between October and January. You will see more of this protected species relaxing on the rugged shoreline and sharp-edged rocks at Il des Phoques (*Island of the Seals*).



At anchor in Wineglass Bay, you'll have time to absorb the true peace of this beautiful place as you relax and enjoy a gourmet Tasmanian Ploughmans lunch hand crafted by the Head Chef at the Freycinet Lodge. Relax and soak up the scenery on your return journey, after an unforgettable adventure.

Overnight at the FREYCINET LODGE in deluxe spa cabins. (B,L)

**DAYS 12/13~TUESDAY/WEDNESDAY~ FEBRUARY 21/22**

**FREYCINET/ASHGROVE CHEESE & WOOLMERS ESTATE ROSE GARDEN/CRADLE MOUNTAIN**

Continue your drive to northern Tasmania, gradually moving up in altitude into one of its most celebrated national parks, Cradle Mountain National Park. En route, visit the Ashgrove Cheese and Woolmers Estate Rose Garden for a unique look into the beautiful gardens and colonial life in Tasmania.



As you pass through the high-country plains and woodlands, keep an eye out for echidnas on the side of the road, and the endemic Tasmanian Green Rosella. Cradle Mountain and Lake St. Clair encompass a huge expanse of subalpine and alpine moorlands as well as important vestiges of cool temperate rainforest. This is home to many of the endemic plants of Tasmania, including the Tasmanian deciduous beech, the state's only deciduous native tree. The oldest rocks in the park are Precambrian sedimentary rocks at least 700 million years old. The area has seen much geological upheaval and has been carved by glacial movement. It is now a World Heritage protected area. Its name is supposedly derived from the mountain's resemblance to a miner's cradle. The entire range of Tasmanian wildlife resides in the park. Common bush-tailed possums, wombats, friendly Tasmanian pademelons, and perhaps a Tasmanian devil or two can be encountered during a walk through the park, and you're likely to be greeted by a band of Bennett's wallabies asking to be fed fresh fruit and vegetables.



On your second day here after dinner, you'll embark on a night excursion to spot the wildlife that call this area home. If lucky, you may see wallabies, possums, wombats and the ever-elusive Tasmanian devil. Devils are primarily a nocturnal species therefore far more active at night. Environmentally sensitive lighting is used and focus is on the social interactions and feeding habits of these unique carnivores, allowing visitors a rare up-close opportunity of seeing Tasmanian devils in a group feeding situation - quite a spectacular sight.





*Lemonthyme Wilderness Retreat holds the Guinness World Record as the biggest "real" log cabin in the southern hemisphere. The Lodge is nestled among pristine temperate rainforest on a valley side just above Lake Cethana. Large Man Ferns throw out their fronds in a gesture of welcome to all visitors. You will stay in charming cabins offering modern amenities, private facilities and your own private stove (wood burning or electric) to take away the chill of the night. Overnights at LEMONTHYME WILDERNESS RETREAT in Tree Top cabins. (B,D;B) <https://www.lemonthyme.com.au/>*

#### **DAY 14~THURSDAY~ FEBRUARY 23**

##### **NARAWNTAPU NATIONAL PARK/TROWUNNA WILDLIFE PARK/SEAHORSE WORLD/LAUNCESTON**

After breakfast, depart Lemonthyme Lodge and head out via Launceston to the Narawntapu National Park, a coastal park featuring long un-spoilt beaches and coastline, abundant wildlife and wildflowers. Previously known as Asbestos Ranges, it is now named with its Aboriginal title to recognize its long and significant place in the history of Tasmania's Aboriginal people. With such a variety of habitats in the park, birdlife is varied and prolific. You are likely to see ducks, waders, sea birds, honeyeaters and, in the dry eucalypt forests, impressive Black Cockatoos and brilliant Green Rosellas. There is a bird hide in the melaleuca at the lagoon for observation. Look for wombats, Forester Kangaroos, wallabies and in the tidal flats oystercatchers.

En route, visit Trowunna Wildlife Park, a privately owned park, where the native Tasmanian fauna and flora thrive. They started caring for the native animals in 1979, and continue to house the world's largest heritage population of endangered Tasmanian Devils. Trowunna also has a great range of marsupials, birds and reptiles on site.





Continue to Seahorse World. The mystical seahorse has always been a source of immense attraction. However, through fishing and habitat destruction, their numbers globally have dwindled. Seahorse World at Beauty Point, Northern Tasmania, is a unique breeding facility designed to help conserve this creature through reducing the wild catch for aquariums, and to provide an excellent tourism and educational experience.



Continue on to Launceston and your hotel. Situated amid steep hills 40 miles inland from the Bass Strait, this attractive little city (population 78,000) is a pleasing mix of modern and British colonial architecture. It's nicknamed the Garden City because of its plentiful parks and squares.

Tonight, enjoy a farewell three course dinner at a local restaurant.

*Your accommodation is at a luxury waterfront hotel situated at the heart of Launceston's Old Seaport Dock area, surrounded by restaurants and cafés offering a good choice of fine food and more casual dining. Stylish and contemporary, the hotel offers premium, luxury, boutique accommodation with superb views out over the Tamar River towards Cataract Gorge.*

Overnight at the PEPPERS SEAPORT HOTEL. (B,D)

<https://www.peppers.com.au/seaport/>

#### **DAY15~FRIDAY ~ FEBRUARY 24**

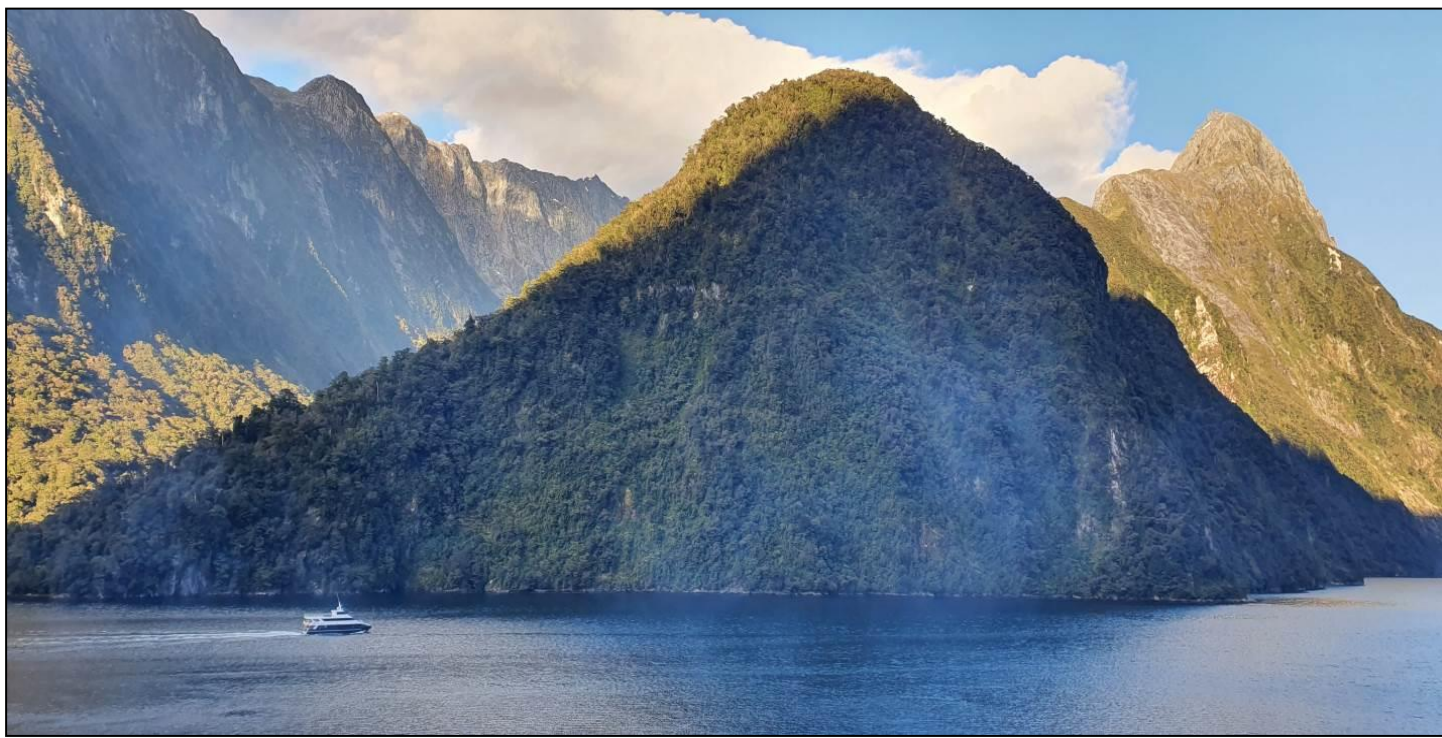
#### **LAUNCESTON/MELBOURNE/AUCKLAND/LOS ANGELES/LINCOLN**

Today your journey concludes as you are transferred to the airport for your flight to Melbourne, where you connect with your flights home. En route, you cross the International Date Line once again and regain your "lost" day, arriving in Los Angeles on the same day you left Melbourne. Connect with your flight to Lincoln. You will have many lingering memories of your trip to the "Land Down Under." (B, Meals Aloft)





## OPTIONAL POST-EXTENSION TO NEW ZEALAND



### DAY 15~FRIDAY~FEBRUARY 24

#### LAUNCESTON/MELBOURNE/QUEENSTOWN

Bid farewell to the rest of the group returning to the USA and fly to the 'adventure capital' of New Zealand, Queenstown. On arrival you will be met and welcomed by your tour guide and transferred to your hotel.

Nestled on the shores of Lake Wakatipu, Queenstown is a year-round alpine resort that caters for all interests. It enjoys a magnificent setting amid steep mountain ranges and pockets of native bush with the jagged peaks of the Remarkables Range rising from the lake. The town is compact enough to travel around on foot and features a great range of restaurants, bars and boutique stores. The lake was scooped out by glacial action thousands of years ago. A mysterious phenomenon causes the lake to vary several inches in depth every few minutes, giving credence to a Maori legend of an ancient Taniwha (demon) still breathing beneath the surface.

*Your home for the next two nights is a luxury hotel in Queenstown City Centre, near Lake Wakatipu. All guestrooms offer perks such as 24-hour room service and air conditioning, as well as amenities like free Wi-Fi and safes. Every room at the hotel provides a refrigerator and all the necessities for a comfortable stay. Each room features a flat-screen TV with satellite / cable channels, in addition to a private bathroom. The Observatory Restaurant, the onsite local cuisine restaurant, features garden views. The hotel also has a health club with spa, sauna and gymnasium, complimentary shuttle to town, and a range of laundry services.*

Overnight at the MILLENNIUM QUEENSTOWN in superior rooms. (B)

<https://www.millenniumhotels.com/en/queenstown/millennium-hotel-queenstown/>





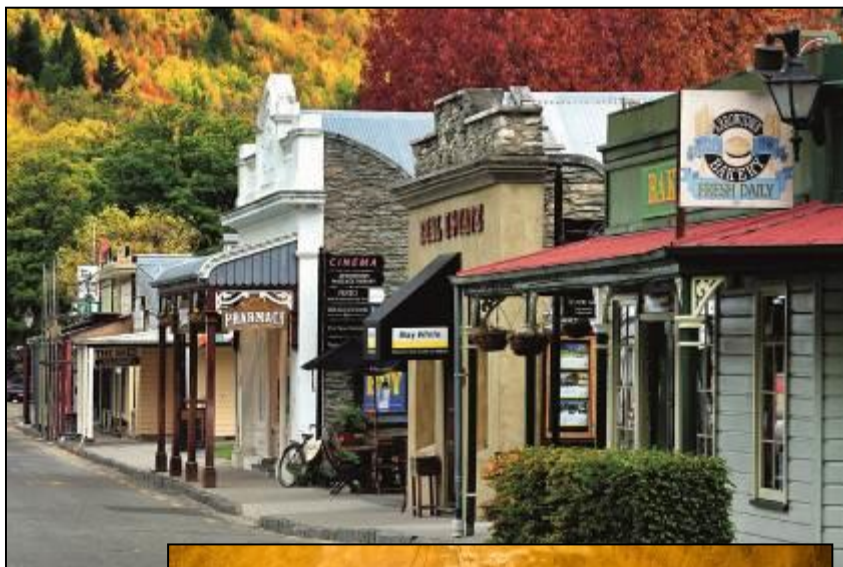
## DAY 16~SATURDAY~ FEBRUARY 25 QUEENSTOWN

Start your sightseeing tour of Queenstown as you travel to Arrowtown 'born of gold' and stroll through this picturesque town and village that has retained its old-world charm and shop at leisure. Later continue to the Kawarau Bridge Bungee (bungee) - home to the original 141 feet bungee jump. If you've heard of bungee, you've heard of the Kawarau, it is where bungee founders AJ Hackett and Henry van Ash started it all. The world's first and most infamous of leaps is still going strong, with tens of thousands bungee jumping each year.

Afterwards, enjoy a winery tour including lunch. Visit the Gibbston Valley Winery that produces award-winning wines of New Zealand in the beautiful Central Otago region. Enjoy an informative, fascinating and legendary cave tour, starting in the historic original Gibbston Valley Vineyard, the tour treks gently down to the prominent wooden cave doors. Behind them lies mystery! Blasted 263 feet into solid Central Otago schist, the cave's walls are flanked by some 400 Pinot Noir barrels, creating a unique ambience, perfect for tasting current releases and talking about the region, people and its wines. Enjoy three wine tastings varieties during your tour. After your tour enjoy lunch at the Gibbston Valley Restaurant.

In the afternoon, enjoy a thrilling Shotover Jetboat ride on the Shotover River. Known as the world's richest gold bearing river, the Shotover's rugged canyons have been carved over thousands of years by billions of tons of glacial water sluicing from the heart of the Southern Alps. Once at the river, board the Shotover Jet for the ride of your life. Skim past rocky outcrops at close range as you twist and turn through the narrow canyons at breathtaking speeds. And a major highlight - hold tight for the world famous Shotover Jet full 360° spin!

Return to Queenstown and your hotel. The rest of the afternoon is at leisure to enjoy Queenstown on your own. Overnight at the MILLENIUM QUEENSTOWN in superior rooms. (B,L)





## **DAY 17~SUNDAY~FEBRUARY 26**

### **QUEENSTOWN/DOUBTFUL SOUND**

Another exciting day awaits you today as you Leave Queenstown and skirt Lake Wakatipu in the shadow of the rugged Remarkable Ranges until you arrive at the township of Five Rivers. Turn off the main highway towards Mossburn, and into the tussock covered hills. Once the highest point is reached there are magnificent views of the mountains of Fiordland to the north, south and west. After a few miles the wide panorama of Lake Manapouri comes into view to reporting location for your Doubtful Sound overnight excursion.

***\*\* Please note, only an overnight bag should be brought onboard for passengers' convenience and safety reasons. Also, remember to bring - Comfortable walking shoes, waterproof jacket, warm clothing, change of clothes, swimwear (optional), sunscreen, sunglasses, insect repellent and camera.***



Go by boat across beautiful Lake Manapouri. A picnic lunch will be provided. Disembark at West Arm and travel by coach over Wilmot Pass through dense rainforest to Deep Cove. Board your overnight vessel, which was designed along the lines of a traditional New Zealand coastal trading scow to reflect Fiordland's heritage. From Deep Cove, you will leisurely cruise and explore Doubtful Sound. Discover the hidden arms of the mysterious sound from spacious viewing decks, kayak alongside bottlenose dolphins or go exploring by small craft - sun drenched blue skies one minute, mist-shrouded the next, with the sounds of leaping fish or distant waterfalls as background music. Overnight aboard the DOUBTFUL SOUND NAVIGATOR. (B, Picnic L,D)

## **DAY 18~ MONDAY~ FEBRUARY 27**

### **DOUBTFUL SOUND/LAKE TEKAPO**

This morning, enjoy a hearty cooked breakfast before returning to Deep Cove. From Deep Cove you will return directly to Manapouri, arriving at midday. Pick up your picnic lunch and then continue by coach to lake Tekapo with stops along the way to admire the beautiful vistas of New Zealand.





Lake Tekapo is a small town located at the southern end of its namesake lake. Since 2012, Lake Tekapo has been deemed one of the rare UNESCO World Heritage Starlight Reserves, making it somewhat of a national park in the sky. Lake Tekapo is one of the best places in New Zealand to enjoy stargazing. There is very minimal light pollution, providing some of the darkest skies. It is also one of the busiest skies, perfect for stargazing.

Lake Tekapo is the second largest lake in the northern part of the McKinch basin, famous for its striking turquoise color. The lake gets its turquoise hue from "rock flour," also known as glacial flour. This fine powder is made when thick, heavy glaciers move down mountain slopes, grinding rocks as they go. The first humans in the region were the Maori, who called the area 'Tekapo', meaning "to leave in haste at night".

*Peppers Bluewater Resort located in Lake Tekapo, offers luxury accommodations, great views and is ideally positioned for exploring the Mackenzie Basin and Southern Alps. The resort has 142 air-conditioned rooms with coffee/tea makers, flat-screen televisions with cable channels and complimentary wireless Internet access. Bathrooms include a shower, complimentary toiletries and a hairdryer. The on-site restaurant, Rakinui, is open daily for breakfast, lunch and an à la carte dinner.*

Overnight aboard the PEPPERS BLUEWATER RESORT in one bedroom villa. (B, Picnic L,D)  
<https://www.peppers.co.nz/bluewater/>





## DAY 19~ TUESDAY~ FEBRUARY 28

### LAKE TEKAPO/MOUNT COOK

Today you travel to Aoraki Mt. Cook National Park for alpine walks and views of New Zealand's highest peak, Aoraki/Mt. Cook. Shaped by the giant forces of nature, massive glaciers have scoured the land leaving a trail of lakes and rivers across the landscape. See awesome mountain ranges – the snowcapped Southern Alps stretching across the western horizon. Mount Cook, New Zealand's highest mountain at 12,316 feet above sea level, towers over the expansive countryside. Hidden in the mountains are magnificent glaciers including the famous Tasman Glacier which is one of the longest glaciers in the world to be found outside the Polar Regions.



This morning, get up close and personal with icebergs on a boat tour of Tasman Terminal Lake; explore the huge dripping ice face of Tasman, New Zealand's largest glacier and taste, touch and walk on 500-year-old ice and snow. Watch as it splits off from the rockface with a thunderous roar crashing into the tranquil surface of the lake.

Your afternoon is ta leisure. Flightseeing over the mountains and glaciers is a very accessible thrill for all, and you'll have a chance to do so at an **extra cost**. Flight options range from airplane flights over both the Mount Cook and adjacent Westland National Parks, to the famous Ski plane landings on the Tasman Glacier, to helicopter landings on panoramic mountaintop snowfields.



On your way back to lake Tekapo visit the Church of the Good Shepard, situated on the shores of Lake Tekapo, which, in 1935, was the first church built in the Mackenzie Basin. The church is arguably one of the most photographed in New Zealand, and features an altar window that frames stunning views of the lake and mountains. Close to the Church is a well-known bronze statue of a New Zealand Collie sheepdog

Overnight at the PEPPERS BLUEWATER RESORT in standard room- Mount Cook View. (B,L)

## DAY 20~ WEDNESDAY~ MARCH 1

### LAKE TEKAPO/CHRISTCHURCH

Leave lake Tekapo behind as you have yet another exciting journey on your drive to the charming city of Christchurch, known as the most "English" city outside of England. The early settlers in Christchurch made the infant town a magnificent gift when the Provincial Government dedicated a large area of land close to the town center as a reserve to be known as Hagley Park. That park



and the Christchurch Botanic Gardens developed within the park have played a major role in earning Christchurch the title of The Garden City. Recorded history of the Gardens dates back from July 1863 when an English oak tree was planted on the banks of the Avon River to commemorate the marriage of Prince Albert Edward to Princess Alexandra of Denmark. That oak tree still lives. It is located near the footbridge over the Avon leading to the Band Rotunda and Daffodil Woodland where in spring you can see a host of golden daffodils fluttering and dancing in the breeze.



Bordering the park, you will find the botanical gardens and the Gothic revival building which houses the Canterbury Museum. The Avon River gently winds its way around these inner-city landmarks and out through sprawling suburbs to the Pacific Ocean. In contrast to this flat cityscape and the surrounding Canterbury Plains, the skyline to the south is dominated by the tussock and rocky outcrops of the Port Hills which separate the city from the volcanic Banks Peninsula and Lyttelton Harbour, where English settlers arrived by ship in 1850 to establish New Zealand's first city.



On arrival, enjoy a private tour of Christchurch. This is a unique opportunity to see Christchurch following the Earthquakes of late 2010, early 2011 and to witness its rebirth. During your sightseeing tour enjoy visits to the following attractions:

### **Punting on the Avon (30 minutes)**

Summer or winter, glide along the peaceful Avon River, wrapped in luxury, as a skilled boatperson propels you through a romantic wonderland. In spring and summer, the sunbeams sparkle and ducklings dive; in autumn and winter the river-level view provides magical photographs. "Welcome aboard," says your punter, dressed in striped blazer, braces, and wearing the straw hat known as a boater. Punting on the Avon is one of the iconic tourist attractions in Christchurch. Like punting at Oxford and Cambridge in England, this punting experience uses flat-bottomed boats with no keel, pushed by a pole. The punter stands on a platform at the end. The passengers sit low down, although high seats can be installed for your comfort and convenience. They supply blankets, umbrellas and even hot water bottles, so you feel snug if it gets chilly. Admire trailing willows and the Christchurch Botanic Gardens, return the waves from children and picnickers – this is "messaging about in boats" the way it ought to be. Relax on velvet cushions and let your troubles melt away.



### **International Antarctic Centre**

The Aquarium displays some specimens from the Antarctic Ocean floor in McMurdo Sound. Explore the Gallery area which is full of informative displays showcasing modern day Antarctica. The Gallery area encourages 'touching' of most of the exhibits to ensure visitors experience Antarctica in a fun and interactive way. Enjoy a 17-minute sound and light show "Beyond the Frozen Sunset" offering stunning footage filmed by Emmy award winning film maker, Mike Single, which follows a seasonal arc from sunset to sunrise. Visit the New Zealand Penguin Encounter, New Zealand's first combined indoor/outdoor penguin viewing area with capacity to hold up to 26 Little Blue penguins. With its centerpiece being a penguin life support area and 80,000-liter pool, the Encounter allows visitors to view Little Blue penguins in a natural-themed environment. The penguins held here are birds that have been rescued and cared for, some since they were chicks.





### Willowbank Wildlife Reserve

Experience New Zealand wildlife first hand. Learn about the diversity of this country's natural environment and history. Willowbank prides itself on its conservation and rehabilitation of rare & endangered New Zealand species. Watch, touch and feed the unique native wildlife, become friends with the farm animals and learn about the introduced pests that have influenced New Zealand's bio-diversity. Enjoy a guided tour of the New Zealand Kiwi bird. The Kiwis are housed in an open and natural enclosure allowing incredible viewing.



This evening enjoy a farewell 4-course dinner onboard the Christchurch Tramway Restaurant which combines fine dining with outstanding sightseeing. In this 36-seater air-conditioned, colonial style dining tram, experience the finest service, cuisine and beverages, all the while enjoying a sightseeing tour showcasing Christchurch's inner city vibrancy and heritage – truly a mix of the old and the new.

*Your home for tonight is the newly renovated Distinction Christchurch Hotel, ideally positioned in the heart of the city only a few minutes' walk from the Avon River, Botanical Gardens, Christchurch Casino, Cashel Mall and future Christchurch Convention Centre. All 179 guest rooms and suites have been designed to create a modern atmosphere while combining all the comforts of home.*

*Bathrooms include free toiletries and hair dryers. Free Wi-Fi.*

Overnight at the **DISTINCTION CHRISTCHURCH**. (B,D)

<https://www.distinctionhotelschristchurch.co.nz/>

### DAY 21~THURSDAY ~MARCH 2

#### **AUCKLAND~ CITY TOUR/LOS ANGELES/LINCOLN**

Arrive at New Zealand's largest city – Auckland this morning by a short flight. Auckland is an urban environment where everyone lives within about half an hour of beautiful beaches, hiking trails and a dozen enchanted holiday islands. It has a sunny climate, a background rhythm of Polynesian culture and a passion for outstanding food, wine and shopping. The city itself is modern and vibrant, the largest city in New Zealand and home to 1.3 million people. It is also the center of commerce and industry, and is as diverse, multicultural and sophisticated as any international metropolis.



Auckland is also recognized as the largest Polynesian city in the world. The city's eclectic mix of culture, theatre, art and leading-edge fashion provides an array of cosmopolitan experiences. And with more than 1,000 restaurants in the region, Auckland provides a huge choice of dining experiences



and distinctive Pacific Rim-style cuisine. Auckland is known in Maori language as Tamaki-Makau-Rau, 'City of One Hundred Lovers'. It is a modern city with a landscape dominated by volcanic hills and is surrounded by subtropical islands, sparkling waters and native rainforest.

Auckland's fiery volcanic past is evident with close to 50 volcanoes scattered throughout the region, creating a fascinating environment to explore. The Auckland isthmus is located between two stunning harbors, the Waitemata, which teems with boating activity and embraces the Pohutukawa-lined shores of the Pacific Ocean, and the contrasting Manakau Harbor, which surges out to the wildly rugged black-sand beaches of the Tasman Sea.

From the airport, travel through some of the older parts of Auckland, past the Auckland Grammar School with its Spanish-style architecture and Mount Eden. Then descend through the graceful Domain to Auckland's War Memorial Museum which houses one of the world's finest collections of Maori artifacts. Pass through quaint Parnell Village and affluent residential suburbs. Then follow Tamaki Drive along the waterfront and later visit the pretty North Shore via the Harbour Bridge. Time permitting, enjoy a visit to Devonport before returning to the city and the Sky Tower Complex.

A truly captivating experience awaits visitors to Auckland's Sky Tower. At 328 meters, it is the tallest man-made structure in New Zealand and offers breathtaking views for up to 80 kilometers in every direction. Travel up in the glass-fronted lifts to one of the three spectacular viewing platforms, including the Sky Deck at 220 meters. Then enjoy a 3-course early dinner at the Orbit Restaurant. Situated at the top of Auckland's Sky Tower, the dining room rotates once every hour, providing a truly unique experience with amazing 360° panoramas of the city, the Hauraki Gulf and beyond.



This evening after dinner you'll be escorted to the airport for your 8:15 pm Air New Zealand flight to Los Angeles. En route, cross the International Date Line and regain your "lost" day, arriving in Los Angeles at 12:20 pm on the same day you left Auckland. Here you connect with your flights to Lincoln bringing with you amazing memories of the world 'down under'! (B,D; Meals Aloft)





## INCLUSIONS

---

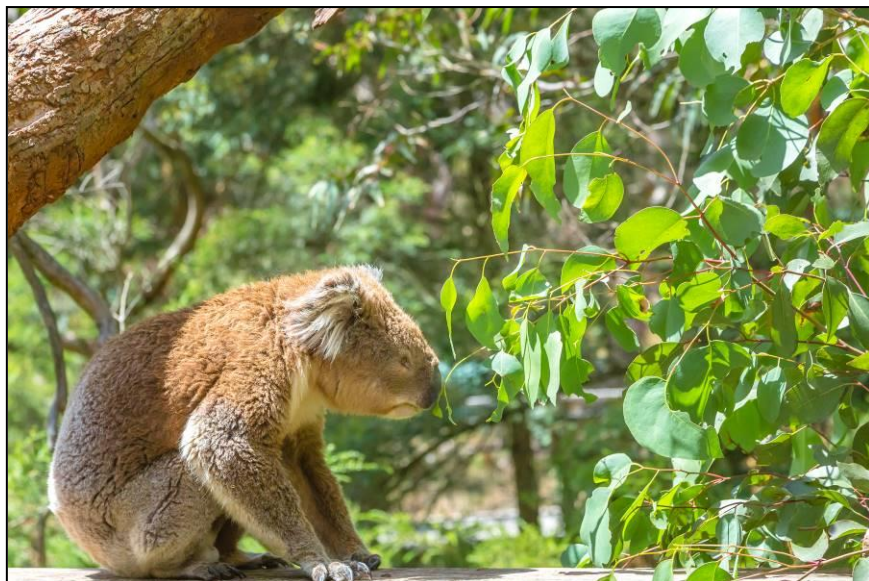
- Flights between Melbourne/Queenstown and Christchurch/Auckland on the post extension to New Zealand.
- Superior accommodations throughout at hotels as listed in the itinerary, or similar.
- Breakfasts daily; other meals as indicated in itinerary.
- Air-conditioned motor coach with experienced local drivers.
- John Chapo will accompany the group with a minimum of 10 travelers on both the main trip and the extension.
- Specialist guide will accompany the group throughout – one in Australia and a different one in New Zealand.
- Local expert guides throughout.
- All applicable hotel/lodge gratuities and taxes.
- All entry fees for included sightseeing venues.
- Complimentary baggage tags and water bottle.
- Complimentary emergency evacuation insurance.

## EXCLUSIONS

---

- Roundtrip air transportation between Lincoln and Cairns returning from Melbourne, including taxes and fuel surcharges (quoted separately).
- Internal flights between, Cairns/Sydney, Sydney/Hobart and Launceston/Melbourne, including taxes and fuel surcharges (quoted separately).
- U.S. citizens currently require visas for Australia. The Australian Government offers Electronic Travel Authority (ETA) visas for tourists and business purposes.
- Tips to drivers and guides.
- Passport and visa fees and service charges for obtaining these documents.
- Excess baggage charges levied by airlines.
- Meals and beverages other than specified.
- Laundry and other items of a personal nature.
- Cost of anything not specifically mentioned in listing above.

PLEASE NOTE THAT THE ITINERARY SEQUENCE IS CORRECT AT THE TIME OF WRITING, BUT IS SUBJECT TO CHANGE.





## THINGS YOU NEED TO KNOW ABOUT AUSTRALIA/NEW ZEALAND

---

### Participants

- Participants must be able to climb in and out of coaches and boats unassisted. You should also be able to tolerate nature walks at an easy pace on uneven terrain, sometimes uphill, sometimes in heat and humidity.
- You should be in good physical health to enjoy this destination to its fullest.

### In general, this trip requires:

- Flexibility and good humor – unexpected changes and/or glitches can occur.
- A spirit of adventure and curiosity.

### Air Schedules

Choosing the best possible air arrangements for our travelers is always a challenge. We work with many airlines that offer the best level of service, routings and value for our programs. While there may indeed be more direct routings available with another airline, the cost of these flights may not be within the budget that allows us to give you the best value possible. If you prefer to purchase your own international air, please feel free to choose the “land only” rate for this program. **The start city for this program is Cairns and the end city Melbourne, Australia. The post extension returns from Auckland, New Zealand.**

*Upon registration, you must provide your full legal name as it appears on your passport. In the event an airline ticket is issued with incorrect information you have provided, you will be responsible for charges associated with reissuing the ticket.*





# YOUR JOURNEY AT A GLANCE

**INCLUDING:** CAIRNS, CAPE TRIBULATION, DAINTREE RAINFOREST, GREAT BARRIER REEF, SYDNEY, HOBART, FREYCINET, COLES BAY CRUISE, CRADLE MOUNTAIN, NARAWNTAPU NATIONAL PARK, TROWUNNA WILDLIFE PARK, & LAUNCESTON.  
NEW ZEALAND EXTENSION INCLUDES QUEENSTOWN, DOUBTFUL SOUND, MT. COOK, LAKE TEKAPO, CHRISTCHURCH & AUCKLAND.

**SPONSORING ORGANIZATION:** LINCOLN CHILDREN'S ZOO

**ESCORTED BY:** JOHN CHAPO, DIRECTOR EMERITUS, LINCOLN CHILDREN'S ZOO

**DATES:** FEBRUARY 10 TO 24, 2023

<b>COSTS:</b> PER PERSON, DOUBLE OCCUPANCY	<b>MAIN PROGRAM</b> <b>BASED ON 10 TRAVELERS</b>	<b>POST- EXTENSION TO</b> <b>NEW ZEALAND</b> <b>BASED ON 10 TRAVELERS</b>
LAND PACKAGE ONLY	\$12,495 PER PERSON	\$5,995 PER PERSON, INCLUDING INTERNAL AIR
ESTIMATED INTERNATIONAL AIR FROM LINCOLN, INCLUDING INTERNAL AIR, ECONOMY, INCLUDING ESTIMATED TAXES CURRENTLY (SUBJECT TO CHANGE)**	\$TBA PER PERSON ADDITIONAL	N/A
PLUS, ESTIMATED INTERNAL AIR WITHIN AUSTRALIA	\$TBA PER PERSON	N/A
SINGLE ROOM SUPPLEMENT*	\$2,995 PER PERSON, ADDITIONAL	\$1,595 PER PERSON, ADDITIONAL

\*SINGLE SUPPLEMENT: RATE IS VALID FOR FIRST TWO SINGLE ROOMS BOOKED. IF MORE THAN TWO SINGLE ROOMS, ADDITIONAL SUPPLEMENT WILL APPLY. SINGLES ARE ASSIGNED ON A FIRST COME/FIRST SERVE BASIS.

\*\*ALL INTERNATIONAL AIRFARES ARE SUBJECT TO CHANGE AND BASED ON MINIMUM OF 10 TRAVELERS. TAXES ARE SUBJECT TO CHANGE UNTIL TICKETED. IF LESS THAN 10 TRAVELERS, THE FARE WILL INCREASE & GIVEN TO THE TRAVELERS PRIOR TO ISSUING THE TICKETS, APPROXIMATELY TWO MONTHS PRIOR TO DEPARTURE. **PLEASE NOTE THAT THE SPECIAL RATES NEGOTIATED BY CLASSIC ESCAPES ARE NOT UPGRADABLE.**

**DEPARTURE CITY:** LINCOLN

(OTHER DEPARTURE CITIES AVAILABLE UPON REQUEST)





## CONDITIONS OF TRAVEL:

---

The purchase of your travel booking constitutes a contractual agreement between the traveler(s), customer(s), and/or purchaser(s) (collectively as "**You**" and "**Traveler**"), and Classic Escapes ("**Classic Escapes**", "**We**", "**Us**") pursuant to the following terms and conditions ("**Terms**", "**Agreement**"):

### REGISTRATION & PAYMENTS

**HOW TO BOOK:** Fill out and sign the enclosed reservation form and send it, along with the relevant deposit as shown below, to: CLASSIC ESCAPES, 191 W Poplar Street, Floral Park, NY 11001 Upon receipt of your signed reservation form and deposit, we will, subject to availability, reserve your spot on the tour. You may consider your booking confirmed when you receive a confirmation notice and invoice from us.

**DEPOSIT AND FINAL PAYMENT:** You will be required to pay the following per person deposits when booking. Those amounts are:

- \$2,500 for the main trip
- \$1,200 for the post extension

All deposits are subject to the Cancellation policy herein. Final payment is required no less than 95 days prior to departure (**November 7, 2022**) unless otherwise stated. Some airfares or services must be paid in full at the time of booking. Deposits may be paid by check, wire transfer or credit card (American Express, Visa, MasterCard, or Discover). Final payment is payable by check, wire transfer, or money order ONLY. Conditioned on receipt of final payment in full, all final documents and air tickets will be sent to you approximately two weeks prior to departure.

**CREDIT CARD TRANSACTIONS:** If for any reason, any travel service provider is unable to provide the services for which you have contracted, your remedy lies against the provider, and not against Classic Escapes, and in the event that payment has been made to Classic Escapes by credit card, you agree that you will not seek to chargeback your payment to Classic Escapes. If the credit card is passed through to the travel service provider and you seek to chargeback your payment from the provider, you agree to be held liable and indemnify Classic Escapes against this chargeback from the provider, including without limitation any air debit memos charged to Classic Escapes. If the credit card is declined, you guarantee that you will settle any amounts owing to Classic Escapes via money order or cash immediately. Except in cases of fraud, you agree not to file any dispute with your bank or credit card company to avoid or violate any booking terms and conditions of Classic Escapes or its suppliers, including cancellations or changes of itinerary or arrangements for reasons beyond the control of Classic Escapes or its suppliers. If you attempt to chargeback, reverse, or recollect a previously authorized trip payment, Classic Escapes reserves the right to collect all additional costs, fees and expenses associated with such chargeback, reversal, or recollection, including, without limitation, attorney fees.

**IMPORTANT CONDITIONS:** Prices are subject to increase prior to the time you make full payment. Prices are not subject to increase after you make full payment, except for charges resulting from increases in government-imposed taxes or fees. By signing the reservation form, you expressly acknowledge your acceptance of these conditions (i.e., increases before full payment and increases attributable to government-imposed taxes or fees after full payment will be your responsibility) applicable to your purchase.

**RATES:** Rates are based on the minimum number of guests outlined in this document, plus airfare costs, currency exchange rates and other factors and are subject to change. Though it is rare for Classic Escapes to make a price adjustment after promotion of an itinerary, we do reserve the right to assess a surcharge if the minimum is not met, or if increases are forced upon us by airlines or other partners or because of changes in currency exchange rates.

**ADDITIONAL FEES:** Additional taxes and surcharges that cannot be pre-collected may be charged locally. Cost of passport and visa fees and service charges for obtaining visa fees; excess baggage charges levied by airlines; laundry and other items of a personal nature; optional travel insurance policy(s); or any other costs incurred that cannot be pre-collected are NOT included and are the sole responsibility of the Traveler.

**SINGLE SUPPLEMENT:** The quoted rate is valid for the first two single rooms booked and on a first-come, first-served basis. If more than two single rooms are needed, an additional supplement may apply. Single accommodations are not guaranteed but will be provided at additional cost if available (see 'Your Journey at a Glance' section for the cost.) The single room supplement pays for privacy, not better accommodations. For passengers who are traveling alone and wish to share a room with another tour member, we will do our best to provide a roommate. However, if this is not possible, you will be required to pay the single room supplement prior to your departure from the USA.



**GRATUITIES, ENTRANCE FEES & TAXES:** Gratuities for baggage handling, service charges and taxes imposed by hotels, and entrance fees to all points of interest as outlined in the itinerary are included in the final cost. U.S. and foreign airport taxes are included in air costs. Tips to drivers and specialist guide(s) are **not** included and are the sole responsibility of the Traveler.

## **CANCELLATIONS, DEVIATIONS & CHANGES**

**TRAVEL INSURANCE:** We recommend travel insurance. Travel insurance can provide financial reimbursement should the unexpected occur.

**CANCELLATION:** Please be aware that most travel bookings are non-refundable and cancelled bookings will incur charges. These charges can be up to 100% of the cost of the booking, regardless of whether travel has commenced. Where we incur any liability for a cancellation fee or charge for any booking that you cancel, you agree to indemnify us for the amount of that fee or charge. Cancellations are only effective upon receipt of written notification. The following per-person fees are applicable; however, depending on the specific itinerary or other factors, we may require a non-refundable deposit:

- Up to 6 months prior to departure (August 14, 2022), \$300 per person administrative fee.
- 6 months to 96 days prior to departure (August 15, 2022 to November 6, 2022), \$300 per person administrative fee, plus \$1,000 non-refundable deposits given to suppliers.
- 95 days to 76 days prior to departure (November 7 to November 26, 2022), deposit is forfeited.
- 75 days to 60 days prior to departure (November 27 to December 12, 2022), 50% refund is possible.
- 59 days or less prior to departure (December 13, 2022), no refund is possible.

These cancellation fees are also in addition to any fees imposed by airlines.

**REFUNDS:** While Classic Escapes uses its best endeavors to ensure that all anticipated accommodation is available as planned, there is no claim of any nature whatsoever against Classic Escapes for a refund, in whole or in part, if any accommodation or excursion is unavailable and a reasonable alternative is not found, or if the Traveler is unable to use any service provided in the itinerary.

**CHANGES:** Once your tour is reserved, changes to the itinerary are possible subject to the availability of air or land space at the time of your request. Should there be any change fees imposed by any airlines or ground operators, or additional costs incurred due to the availability of any space, these costs will be invoiced to you and you will be responsible for payment thereof.

**SPECIAL ARRANGEMENTS:** Should you wish to make additional travel plans, including specially arranged pre- or post-tour extensions different than those offered in conjunction with your tour, a service charge of \$150 per person (over and above the cost of the services required) will be assessed.

## **DOCUMENTS**

**PASSPORTS:** All individuals departing from the United States of America must be in possession of a valid passport. Please check that your passport is valid for at least 6 months beyond your intended return date. It is your responsibility to ensure that you have valid travel documentation, including but not limited to passports and visas, which meet the requirements of immigration and other government authorities at every destination. You are responsible for confirming with the United States Department of State or the representative government agency of the country to which you are traveling to confirm the requirements for visas and/or other requirements for admission to your destination. Any fines, penalties, payments, or expenditures incurred as a result of such documents not meeting the requirements of those authorities will be your sole responsibility.

**REAL ID:** Beginning October 1, 2021, if you plan to use your state-issued ID or license to fly within the U.S., it is your responsibility to make sure it is REAL ID compliant. If you are not sure if your ID complies, please check with your local state Department of Motor Vehicles or visit [www.tsa.gov/real-id](http://www.tsa.gov/real-id).

**TRAVEL DOCUMENTS:** It is the responsibility of each Traveler to obtain and carry a valid passport, visa(s), and all other documents required by applicable government regulations. When traveling domestically or internationally, the U.S. Transportation Security Administration (TSA) and U.S. Department of Homeland Security (DHS) advise that everyone carry acceptable identification in order to board a flight. Acceptable identification can be found at <http://www.tsa.gov/traveler-information/acceptable-ids>. The name, date of birth and gender that appears on the identification card must exactly match the same such data that is listed on airline ticket(s) and booking records. You acknowledge any failure to strictly comply with these requirements may result in denied boarding or an undue delay at an airport security checkpoint causing Traveler to miss flight(s), and subsequent scheduled travel bookings on cruises and tours.

Travel documents include, without limitation, airline tickets, hotel vouchers, tour vouchers, or any other document (whether in electronic form or otherwise) used to confirm an arrangement with a service provider. Travel documents may be subject to certain



conditions and/or restrictions such as, but not limited to, being non-refundable, non-date-changeable, and subject to cancellation and/or amendment fees. Travel documents cannot be transferred to another person to use. All airline tickets must be issued in the name of the passport/photo identity holder. An incorrect name on a booking may result in an inability to use that booking and the booking being cancelled. Any errors in names, dates, and timings may result in an inability to use that booking and the booking being cancelled. Any errors in names, dates, and timings on your documentation will be your responsibility if we are not advised at the time of booking. Please reconfirm your flights at least 24 hours prior to departure.

**PRE-DEPARTURE INFORMATION:** Upon receipt of your registration and deposit, we will send you an electronic pre-departure packet containing all the information you need to prepare for your tour, including the complete itinerary, packing checklist, required documents, insurance information, etc.

**FINAL DOCUMENTS:** Electronic final documents and air e-tickets will be sent to you approximately two weeks prior to departure, provided all monies have been paid in full.

## **TRANSPORTATION**

**AIR TRANSPORTATION:** Your program offers the ability to purchase at additional cost roundtrip, economy-class flights between (LINCOLN), and the destination city noted in the itinerary. Rates are based on special promotional fares; cancellation fees apply once tickets are issued. Departures from other cities in the USA are possible at additional cost; inquire at the time of reservation. Please note that these promotional fares are subject to 10 passengers traveling together on the same airline routing and itinerary. If this minimum is not met, the special group rates are not applicable, and it might become necessary to issue instant purchase tickets earlier than when final payment is due in order to take advantage of airfares that are similar to the group rates. Should this occur, you will be contacted with the details.

**AIRLINE SEATING:** We request seats together for the group wherever possible. All planes are non-smoking. We can request a seating preference on your behalf, however requested seats cannot be guaranteed. Requests should be made in writing no later than 60 days prior to departure. Bulkhead and/or emergency row seats can only be requested at airport check-in on the day of departure. Classic Escapes cannot provide the **Comfort Seating Service** as this is available on specific flights subject to availability and commercial laws as determined by each airline and at their own discretion. Boarding passes are generally issued at the airport on the day of departure, or in some cases if you pre-check yourself 24 hours prior to departure. You may inquire about seat changes during check in at the airport, based on availability and is at the sole discretion of airline staff.

**FREQUENT FLYER MILEAGE:** Check on the airline's website to enquire who their partners are. Obtain frequent flyer mileage on any of these carriers. Present your frequent flyer card for all flight check-ins and keep the boarding passes until you receive a statement with the mileage credit.

**TRANSFERS:** Roundtrip airport transfers are included in the tour for guests arriving on group flights. If travelers make their own air arrangements, they will be subject to extra transfer fees.

**FLIGHT CONFIRMATION:** We strongly suggest that you reconfirm exact flight times with the carrier prior to departure. Air travelers are required to check in at least 2 hours prior to departure time for domestic flights and 3 hours for international flights and must report to the gate at least 30 minutes prior to departure time. Failure to comply may result in the loss of the seat to another passenger.

**HAZARDOUS MATERIALS:** Federal law prohibits passengers from bringing hazardous materials on the aircraft. Federal law forbids the carriage of hazardous materials aboard aircraft in the passenger's luggage or on the passenger's person. A violation can result in five years' imprisonment and penalties of \$250,000 or more (49 U.S.C. 5124). Hazardous materials include explosives, compressed gases, flammable liquids and solids, oxidizers, poisons, corrosives, and radioactive materials. Examples: Paints, lighter fluid, fireworks, tear gases, oxygen bottles, and radiopharmaceuticals. There are special exceptions for small quantities (up to 70 ounces total) of medicinal and toilet articles carried in the passenger's luggage and certain smoking materials carried on the passenger's person. For further information, each passenger should contact the relevant airline representative(s) on their itinerary. Restrictions on hazardous materials are listed <http://www.tsa.gov/traveler-information/prohibited-items>.

**INSECTICIDE NOTICE:** Some countries require insecticide spraying of aircraft prior to a flight or while you are on the aircraft. We recommend that you refer to the Department of Transportation's list of airports in countries that require airlines to treat the passenger cabin with insecticides prior to the flight or while on the aircraft available at <https://www.dot.gov/office-policy/aviation-policy/aircraft-disinsection-requirements>.

**BAGGAGE & FEES:** Additional fees for baggage may apply. Please contact your airline or refer to its website for detailed information regarding its checked baggage policies. On average, international flights from the USA allow one piece of checked luggage, not exceeding 50 pounds, plus a carry-on piece not exceeding 15 pounds; however, we always recommend that you check your airline's policy just before



departure, as luggage limitations are always subject to change. There may also be luggage and weight restrictions for your destination and that information will be forwarded to you with your pre-departure material and also listed on your final documents.

**AIRLINE CLAUSE:** The airlines concerned are not to be held liable for any act, omission, or event during the time the passengers are not on board their planes or conveyance. The passengers' tickets in use by the airline or by other carriers concerned when issued shall constitute the sole contract between the airlines and the purchaser of these tickets and/or passengers.

**DELAYS:** We cannot be held liable for any delays or additional costs incurred as a result of airlines not running to schedule. Any additional land or air fees imposed on account of airline delays will be borne by the traveler.

## **TRIP DETAILS**

**ACCOMMODATIONS:** You will marvel at the wonderful accommodations provided throughout your tour. All rooms have private bathroom facilities and air conditioning and/or fans, unless otherwise specified. All rates are based on double occupancy. Most rooms are twin-bedded, but king-size beds are occasionally available and should be requested in advance. Accommodations listed in this itinerary are correct at time of writing, but on rare occasions may be substituted for a different property of comparable quality.

**MEALS:** All meals as specified in the itinerary. Please notify us if you have special dietary needs or requests, and we will do our best to accommodate.

**WATER:** It is always advisable to drink bottled and/or filtered water when traveling overseas. Safe drinking water will be provided to travelers free of charge in the vehicles and during meals.

**PHOTOGRAPHY:** The Company reserves the right without further notice to make use of any photograph or video taken on the tour by our photographers without payment or permission. We guarantee that no photographs of a compromising nature will be used.

**GUIDES:** If one of Classic Escapes' guides are unable to take a trip due to circumstances out of our control (i.e., illness, etc.), we reserve the right to substitute with another guide.

**TOUR ITINERARY:** To the best of our knowledge the itinerary is correct at the time of printing. We cannot be held responsible for any inaccuracies or changes that may occur after printing.

**HEALTH AND SPECIAL REQUIREMENTS:** You must have the proper immunizations and health screenings and required documentation of such immunizations and screenings before travel. It is your responsibility to ensure you are aware of any health requirements, health advisories, or health travel restrictions applicable to your travel destinations and to ensure that you carry all necessary vaccination documentation. Classic Escapes is not responsible for providing you with this information. Travel carriers and local authorities at travel destinations may require specific testing prior to boarding and/or upon arrival at your destination, including, but not limited to, a temperature check as a result of the COVID-19 pandemic. You may be denied entry onto your carrier and/or entry upon arrival at your destination or be required to self-quarantine at your destination and upon your return to the United States. You must comply with local government regulations. Any additional costs are your responsibility. Check the State Department Web site <http://travel.state.gov>, for relevant information relating to travel to specific destinations, and the Center for Disease Control <http://wwwnc.cdc.gov/travel/> relating to health issues related to travel.

You must be in good physical and mental health. It shall be your duty to inform us in case you have any medical condition that may affect your ability to enjoy and pursue fully the services of Classic Escapes. By registering for a Classic Escapes service/program, you certify that you do not have any mental, physical, or other condition or disability that would create a hazard for yourself or others.

### **COVID-19 ACKNOWLEDGEMENT**

In order to participate in one of our tours, travelers must certify that they have not recently been treated for, nor are aware of any physical or other condition or liability that would create a hazard to themselves or other members of the tour and agree to comply with all health protocols as directed by Classic Escapes and their representatives during their journey. Travelers must maintain suitable physical distancing and frequently wash or sanitize hands throughout their journey. Travelers are required to wear masks in vehicles, indoor areas, any outdoor areas where physical distancing is not possible and in accordance with local regulations. Noncompliance with these procedures will result in the suspension of the journey. Travelers voluntarily assume all risks and related expenses in the event that they or any member of their travelling party require testing, quarantine or become infected with COVID-19.

**TRAVEL INSURANCE:** For your protection, we strongly recommend that you purchase trip cancellation and travel accident insurance. However, no representation or description of the insurance made by Classic Escapes to you constitutes a binding assurance or promise about the insurance. Classic Escapes is not an insurance company and has no responsibility for the submission, payment, or



adjustment of any insurance claims. Any insurance claims that may fall under the relevant travel insurance policy must be submitted to the insurance company identified in the policy. We recommend the following service – please visit the website to enroll:

<http://www.travelguard.com/classicescapes/>. Any questions about what travel insurance does or does not cover should be addressed directly to the travel insurance company, Travel Guard at 1-866-385-4839 and reference ARC #71298. If you decline insurance coverage, you will personally assume full responsibility for any financial loss associated with your travel arrangements, and you could lose your travel investment and/or have to pay more money to correct the situation. THE PURCHASE OF TRAVEL INSURANCE IS HIGHLY RECOMMENDED ON ALL TRIPS.

**EMERGENCY EVACUATION COVERAGE:** For the convenience of our travelers, Classic Escapes provides a complimentary Medical Insurance Plan during your trip via Travel Guard Group, Inc. This includes:

- Emergency evacuation insurance up to \$100,000.
- Up to \$25,000 medical expense and up to \$500 dental expense coverage subject to the terms and limitations of the insurance policy.
- 24-hour worldwide travel and medical assistance.

Medical Plan (926801)

Please click here to view complete coverage of details.

[https://webservices.travelguard.com/Product/FileRetrieval.aspx?CountryCode=US&StateCode=AL&ProductCode=926801&PlanCode=NW&FileType=PROD\\_PLAN\\_GM](https://webservices.travelguard.com/Product/FileRetrieval.aspx?CountryCode=US&StateCode=AL&ProductCode=926801&PlanCode=NW&FileType=PROD_PLAN_GM)

## **TERMS & CONDITIONS**

**TOUR OPERATOR:** Classic Escapes acts as a tour operator/travel agent only. Classic Escapes does not own, operate, manage, or control any independent suppliers of services and is not liable for their acts or omissions. Classic Escapes' obligations to you are to make travel bookings on your behalf and to arrange relevant contracts between you and other travel service providers. We have no responsibility for these services, nor do we have the authority to make any warranty or representation regarding their standard. Requests cannot be guaranteed. All bookings are subject to the terms and conditions and limitations of liability imposed by these travel service providers. You understand that your legal recourse is against the specific provider, not Classic Escapes. Conditions can change rapidly in a country at any time. It is your responsibility to check the USA Government Travel advisories for your intended destination at <https://travel.state.gov/content/travel.html>.

**RESPONSIBILITY OF THE COMPANY:** We always do our best to make sure your travel arrangements are satisfactory. However, Classic Escapes and its employees, shareholders, subsidiaries, affiliates, officers, directors, successors, agents, and assigns do not own or operate any third-party entity that provides goods and services for your travel, including without limitation lodging facilities, airline, vessel, motorcoach, or other transportation companies, local ground operators, providers, food service providers, etc. All such persons and entities are independent contractors and are in no way affiliated to Classic Escapes. We are not liable for any delays or additional costs incurred by the Traveler as a result of any actions or occurrences by any of the foregoing third party entities.

**LIABILITY:** Classic Escapes is not liable for any negligent or willful act or failure to act of any travel service provider or of any third party.

Because Classic Escapes does not have the right to control the operations of such travel service provider or any third party, you agree that Classic Escapes is not liable for any personal injury or property damage which may arise out of these services. Classic Escapes hereby disclaims any liability whether based on contract, tort, strict liability or otherwise, including without limitation liability for any direct, punitive, special consequential, incidental or indirect damages, in connection with the goods or services provided by any supplier booking through Classic Escapes, including without limitation liability for any act, error, omission, injury, loss, accident, delay or irregularity which may be incurred through the fault, negligence, willful acts, omissions or otherwise of such travel service provider or any third party, or their respective employees, agents, servants, or representatives, including, without limitation, their failure to deliver or their partial or inadequate delivery of services, their cancellation and refund policies, fuel increases, bankruptcy or cessation of operations and other matters outside of Classic Escapes' control, and you hereby exonerate Classic Escapes from any liability with respect to the same.

**FORCE MAJEURE:** Classic Escapes will not be in breach of these terms and conditions or otherwise be liable to you, for any failure or delay in performing an obligation under this Agreement that is due to any of the following causes, to the extent beyond its reasonable control: acts of God, accident, riots, war, terrorist act, illness, disease, epidemic, pandemic, quarantine, civil commotion, breakdown of communication facilities, including web host and internet service provider, breakdown or malfunction of equipment, destruction of or serious damage to facilities, natural catastrophes including, but not limited to extreme weather events, floods and volcanic eruptions, governmental acts or omissions, changes in laws or regulations, national strikes, fire, explosion, generalized lack of availability of raw materials or energy, and any other unforeseen circumstance which is beyond the control of Classic Escapes. THE PURCHASE OF TRAVEL INSURANCE IS HIGHLY RECOMMENDED ON ALL TRIPS.

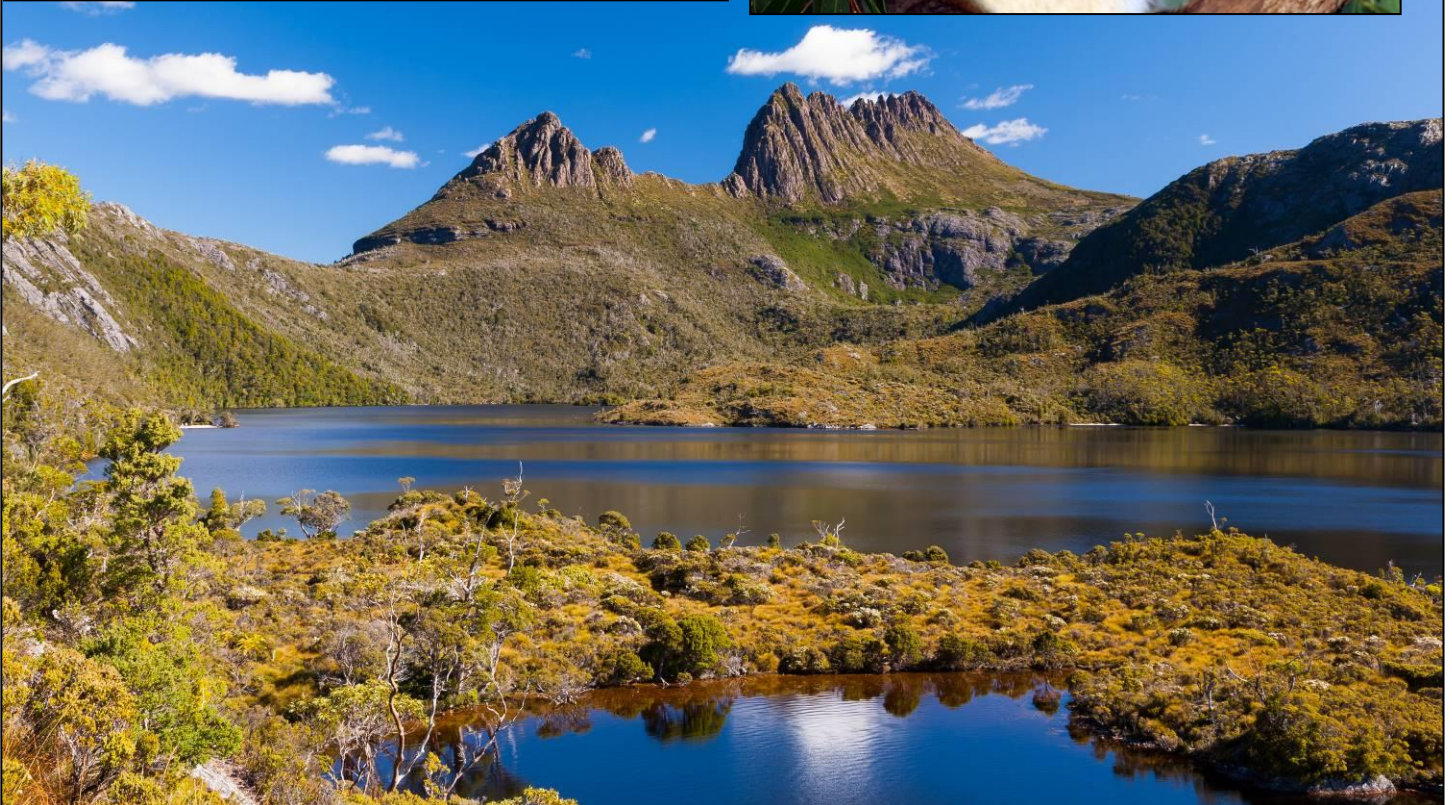


**REFUSAL OF SERVICE:** Service providers reserve the right to refuse service to travelers at their sole discretion, including, without limitation, if the traveler: (i) lacks proper documentation for the country of destination; (ii) has a contagious disease; (iii) is under the influence of alcohol, drugs, or narcotics; and/or (iv) manifests disruptive and/or unruly behavior. Classic Escapes assumes no liability for the acts of the service provider in refusing service.

**ELECTRONIC OR HANDWRITTEN SIGNATURE:** Both parties agree that you may acknowledge and agree to these Terms: (i) electronically; (ii) by handwritten signature; (iii) by any other electronic means, including, without limitation, via email acceptance of these Terms; or (iv) by your implied consent deemed via your actions, which shall include without limitation the payment of the invoice in part or in full or your use of the services provided by Classic Escapes or any other travel supplier related to your booking. All such means will be deemed to constitute effective acknowledgement and execution of this Agreement and shall be sufficient to bind the parties to the terms and conditions of this Agreement.

**RESERVATION OF RIGHTS:** We reserve the right, in our sole discretion, to change these Terms and Conditions at any time. Updated versions of the Terms will be provided to you, will be posted on our website, and are effective immediately on posting.

**GOVERNING LAW:** The construction, validity, and performance of these Terms and any disputes between the parties shall be governed by and construed according to the laws of the State of New York, without giving effect to its conflict of law principles, and any federal laws applicable therein. Both parties submit to the exclusive jurisdiction of the courts of the State of New York with respect to any legal proceedings relating to these Terms.



# RESERVATION FORM:

LINCOLN CHILDREN'S ZOO ~ Australia

23SPZ0210/LCZ

Enclosed is my deposit for \$ \_\_\_\_\_ (\$2,500 per person for the main trip, plus \$1,200 for the New Zealand post extension) to hold \_\_\_\_\_ place(s) on a Classic Adventure to Australia departing on February 10, 2023. Cost is \$12,495 per person, double occupancy, land only. Estimated international air from Lincoln is \$TBA per person, including departure taxes & fuel surcharges (As of December 4, 2021, subject to change).

Final payment due date is **November 7, 2022**

Please make check payable to CLASSIC ESCAPES, 191 W Poplar Street, Floral Park, NY 11001 OR

Charge deposit to: ☐ MasterCard ☐ Visa ☐ American Express ☐ Discover

(Credit Card Authorization form needs to be completed and returned to Classic Escapes via mail or fax to 718-204-4726)

Deposits can be made by credit card; however, **all final payments are required to be made by check or money order only.**

**A copy of your passport must accompany this form to confirm reservation. Upon receipt of your signed reservation form, passport copy and deposit we will, subject to availability, reserve your spot on the tour. Passport must be valid for at least 6 months after the return of your trip and have four consecutive blank pages in the visa section**

1) NAME (As appears on passport): ☐ Mr. ☐ Mrs. ☐ Ms. \_\_\_\_\_ DOB \_\_\_\_\_

Passport No. \_\_\_\_\_ Green Card No. \_\_\_\_\_ Expiration Date \_\_\_\_\_ Nationality \_\_\_\_\_

2) NAME (As appears on passport): ☐ Mr. ☐ Mrs. ☐ Ms. \_\_\_\_\_ DOB \_\_\_\_\_

Passport No. \_\_\_\_\_ Green Card No. \_\_\_\_\_ Expiration Date \_\_\_\_\_ Nationality \_\_\_\_\_

NAME FOR NAME BADGE IF DIFFERENT FROM ABOVE: 1) \_\_\_\_\_ 2) \_\_\_\_\_

STREET ADDRESS: \_\_\_\_\_

CITY: \_\_\_\_\_ STATE: \_\_\_\_\_ ZIP: \_\_\_\_\_

PHONES: HOME: ( ) \_\_\_\_\_ OFFICE: ( ) \_\_\_\_\_ MOBILE: ( ) \_\_\_\_\_

E-MAIL ADDRESS: \_\_\_\_\_ FAX: ( ) \_\_\_\_\_

☐ I certify that I have not recently been treated for, nor am I aware of any physical or other condition or liability that would create a hazard to myself or the other members of this tour.

☐ The two of us above are sharing a room and, where possible, would like a room with: ☐ ONE ☐ TWO Beds (Make one selection only)

☐ I am sharing with \_\_\_\_\_ (form sent separately)

☐ I need assistance in securing a roommate. I understand if Lincoln Children's Zoo or the tour operator cannot locate one for me by final payment date, I agree to pay the additional single supplement amount listed on the Journey at a Glance page.  
I prefer to share with: ☐ Smoker ☐ Non-smoker

☐ I desire single accommodations, if available, and will pay the single supplement additional cost of:  
☐ \$2,995 for the main program ☐ \$1,595 for the New Zealand extension

☐ I/We wish to participate in the optional extension(s) at an additional per person cost of \$5,995 Per Person

☐ Please make my/our round-trip air reservations on the group flights from Lincoln.

☐ Please make domestic round-trip air reservations for me from my home city: \_\_\_\_\_ to connect with the group flights and let me know the additional cost.

☐ Please send me information on air upgrades for: ☐ Business/First Class (only one class - business/first - exists)

Airline Seating Preference ☐ Aisle ☐ Window Frequent Flier # \_\_\_\_\_

*\*\*We can request a seating preference on your behalf, however this is only a request and NOT guaranteed, as some seating assignments may be airport check-in only. Requests should be made in writing no later than 60 days prior to departure. Bulkhead and/or emergency row seats can only be requested at airport check-in on the day of departure. Also note that even if we do obtain your preferred seat, it is not guaranteed that the seat will be provided during check-in as there might be equipment changes that nullify our selection.*

☐ I/We will make own air arrangements and will provide you with an itinerary before trip departure.

All rates quoted are based on tariffs and value of foreign currencies in relation to the U.S. dollar in effect as of December 4, 2021 and are subject to change. Refund is made less any cancellation charges levied in accordance with the policy outlined in the accompanying Conditions of Travel. **WE STRONGLY RECOMMEND THAT YOU OBTAIN TRAVEL INSURANCE. RESERVATIONS ARE ACCEPTED SUBJECT TO TOUR CONDITIONS AND WILL BE CONFIRMED ONLY IF ACCOMPANIED BY COMPLETED FORM SIGNED BY THE TOUR PARTICIPANT(S).**

SIGNATURE: \_\_\_\_\_ DATE: \_\_\_\_\_

SIGNATURE: \_\_\_\_\_ DATE: \_\_\_\_\_

CLASSIC ESCAPES INC.

191 W Poplar Street, Floral Park, NY 11001

(We recommend that you keep a copy of your selections as noted above for your future reference)





191 W Poplar Street, Floral Park, NY 11001  
T: (718) 280-5000; (800) 627-1244  
F: (718) 204-4726  
E: info@classicescapes.com

LINCOLN CHILDREN'S ZOO ~ AUSTRALIA  
FEBRUARY 10 TO 24, 2023

CREDIT CARD PAYMENT AUTHORIZATION

*Please Note: If you wish to charge your deposit to Visa, MasterCard, American Express or Discover, this authorization form MUST be completed and returned to us along with your reservation form before we can process your application.*

I authorize (**Classic Escapes Inc.**) to charge my VISA/MASTERCARD/DISCOVER/AMEX listed below:

Name appearing on credit card \_\_\_\_\_

Card number \_\_\_\_\_ Expiration date \_\_\_\_\_

Card Verification Number\* \_\_\_\_\_ Card Type \_\_\_\_\_

Billing address of credit card \_\_\_\_\_

Amount of transaction \_\_\_\_\_

Services rendered/Items purchased \_\_\_\_\_

Phone number \_\_\_\_\_

Signature \_\_\_\_\_ Date \_\_\_\_\_

**\*How To Locate Your Card Verification Number:**

(**Visa, MasterCard, Discover:** Locate the credit card number on the back of the card above the signature box. Enter the 3-digit number which follows the credit card number. **American Express:** Enter the 4-digit number found directly above and to the right of the credit card number.)

I understand that all rates quoted on this tour I'm making a payment on are based on tariffs and value of foreign currencies in relation to the U.S. dollar in effect as of December 4, 2021, and are subject to change Cancellations are only effective on receipt of written notification. The following per person fees are applicable on this tour:

- Up to 6 months prior to departure (August 14, 2022), \$300 per person administrative fee.
- 6 months to 96 days prior to departure (August 15, 2022 to November 6, 2022), \$300 per person administrative fee, plus \$1,000 non-refundable deposits given to suppliers.
- 95 days to 76 days prior to departure (November 7 to November 26, 2022), deposit is forfeited.
- 75 days to 60 days prior to departure (November 27 to December 12, 2022), 50% refund is possible.
- 59 days or less prior to departure (December 13, 2022), no refund is possible.

These cancellation fees are also in addition to any fees imposed by airlines.

PLEASE NOTE: At times, our bank requires photocopy of credit card (both sides) and driver's license or document showing signature of cardholder, in order to process the charge. While it is not required at this time that you include these materials with your deposit, if our bank requests it, we will contact you for these copies.