

YOU ARE CORDIALLY INVITED TO JOIN THE
LINCOLN CHILDREN'S ZOO

ON A WILDLIFE FAMILY SAFARI TO
TANZANIA

WILD KINGDOM'S 'GARDEN OF EDEN'

JUNE 14 TO 25, 2023



COUNTRY OVERVIEW ~ TANZANIA

Discover quintessential African landscapes when you explore Tanzania, the perfect East African destination for any traveler with an open mind and heart to experiencing wildlife and culture, past and present. A relaxed attitude combined with some of the best wildlife spotting on the continent is within reach. Your safari hits all of the incredible spots, from the unique eco-system of Ngorongoro Crater and vast savannahs of the Serengeti, to the baobab filled Tarangire. Along the way, see where the roots of modern man were unearthed by the Leakeys and visit a Maasai village. Venture into remote areas staying in tented camps and beautiful lodges that seemingly blend into the landscape and serenaded only by the wildlife around you. An unforgettable adventure awaits you!



YOUR ZOO ESCORT~ JOHN CHAPO, DIRECTOR, LINCOLN CHILDREN'S ZOO

John Chapo has over 45 years of professional Zoo experience, over 40 as a director. He started out in the zoo world as a 15-year-old volunteer at the Potawatomi Zoo in South Bend Indiana and worked his way to the top in 11 years, becoming zoo director at age 26. John has worked at the Lincoln Children's Zoo for 35 years. This will mark John's ninth trip to Africa and fourth to the Serengeti and Ngorongoro Crater. His first Africa trip was in 1989, and in his words he "*Immediately fell in love with Africa!*" John is past Chair of the Nebraska Tourism Commission and also serves on the AZA Government Affairs Committee and is an AZA Accreditation Inspector.



YOUR PROFESSIONAL NATURALIST-GUIDE ~ ROBERT MARKS MOSHI

Robert Marks Moshi is a native Tanzanian with the distinction of being adopted at a very early age and raised by a Scottish missionary doctor. Robert's love for conservation and wildlife started early and he earned his master's degree by focusing on the study of elephants and their behavior. His mentor is Cynthia Moss and he spent time studying in her Amboseli headquarters, as well as the Daphne Sheldrick Elephant Orphanage in Nairobi. Now a naturalist guide back in his beloved native land, Robert lives in bustling Arusha when he is not showing guests around Africa, but he is most at home in the wild where his keen eye can spot a lion or a cheetah in the distance and his passion for his fellow people is evident as he shares insights and lore. Robert has a generous heart and a gentle smile and is excited to share the glories of East Africa with you.



YOUR ITINERARY

DAY 1~ WEDNESDAY~ JUNE 14

LINCOLN/EN ROUTE

Your journey begins as you board your overnight flight to Tanzania. (Meals Aloft)

DAY 2~ THURSDAY~ JUNE 15

ARRIVE ARUSHA

Upon arrival in Arusha in the evening (*depending on your flights*), you will be met by your Classic Escapes representative and transferred to your hotel.

Located on a coffee plantation on the shores of the lake from which it gets its name, the Arusha Serena Hotel is the perfect place to relax before embarking on your safari experience. Designed in the style of an African village, guests are housed in cottages thatched with banana fronds, surrounded by tropical shade trees and bougainvillea. All guest rooms have en suite bathrooms and many amenities. The lodge boasts magnificent views of the mighty snow-capped Mount Kilimanjaro on one side and Lake Duluti and the rugged peaks of Mount Meru on the other.

Overnight at the ARUSHA SERENA HOTEL. (Meals Aloft)

<http://www.serenahotels.com/serenaarusha/default-en.htmlsp>



DAYS 3/4/5~FRIDAY/SATURDAY/SUNDAY~ JUNE 16/17/18

TARANGIRE NATIONAL PARK

Wake up feeling refreshed and eager to start your journey as you drive to Tarangire National Park, the third largest national park in Tanzania. The feeling that this is a special, almost magical place strikes you as soon as you enter Tarangire and you witness your first baobab tree. Here the gently rolling countryside is dotted with these majestic trees, which seem to dwarf the animals that feed beneath them. Called the “tree of life,” many myths and legends surround *Adansonia digitata* (*Adansonia* for the French surgeon Michel Adanson and *digitata* meaning hand-like, a reference to the shape of the leaves). Your guides regale you with one or two of these tales as you pass through the park. This stretch of Africa is spectacular in the dry season when many of the migratory wildlife species come back to the permanent waters of Tarangire River. Huge herds of wildebeest, zebra, eland and oryx gather to stay in Tarangire until the onset of the rains when they migrate again to good grazing areas. For those who love birds, Tarangire has over 300 bird species. But in addition to all those magnificent trees, birds and beasts, Tarangire is superlative for another reason – elephants. Tarangire is home to the largest population of elephants in northern Tanzania, now numbering close to 2,500 individuals.



Your accommodation for the next two nights is a permanent safari camp built close to the shores of Lake Manyara in a wildlife rich area with impressive views of the Rift Valley and Ngorongoro Highlands and is a 62,000-acres concession area set aside for conservation by the local Maasai Community. The 38 spacious tents and the six family units as well as the public areas of the camp are built on raised decks and have en suite bathrooms with built-in showers and mosquito netting and private verandahs overlooking the valley and Lake Manyara. There is a lovely swimming pool with beautiful views located at the end of the main decking area attached to the bar and dining area, overlooking the plains. Enjoy delicious indoor or outdoor dining at the camp's restaurant, accompanied by lovely wilderness views.



Overnights at MARAMBOI TENTED CAMP. (B,L,D Daily)
<http://twctanzania.com/en/accommodation/maramboi-tented-lodge/>

DAY 6~ MONDAY~ JUNE 19

LAKE MANYARA NATIONAL PARK/NGORONGORO CONSERVATION AREA

Drive to Lake Manyara National Park (80,300 acres,) an ornithological paradise with over 350 species of birds. You may see Verreaux's Eagle, a variety of vultures, storks, swifts and swallows winging their way atop the spectacular cliffs overlooking the lake. Lake Manyara, at 3,150 feet varies in salinity levels with wetter and drier climate cycles, and at times it is replete with flamingos, pelicans, storks and cormorants. Springs in the park's northern end support a dense groundwater forest of magnificent giant fig and mahogany trees which shelter blue vervet monkeys and an abundance of baboons, bushbuck, waterbuck, and elephant. South of the groundwater forest, acacia woodland and open grassland are frequented by buffalo, wildebeest, impala, giraffe, zebra, and the elusive tree-climbing lions – the signature of this park. Perhaps the most recognizable tree found here is the baobab tree, which folklore says was uprooted and planted upside down. The hippo pool, where visitors may get out of their vehicles, is located on a freshwater stream that enters the lake at its northern tip.



Enjoy a game run at Lake Manyara National Park before continuing on to your home for the next two nights Ngorongoro Serena Lodge.

As if in a land before time, the Ngorongoro Serena Safari Lodge is built into the rim of the crater. The plant and ivy-covered native stone blends masterfully with its surroundings and the flowering plants attract a plethora of colorful birds. Most of the 75 rooms have private terraces with views of the crater floor where countless animals make their home. At the Ngorongoro Serena Lodge visitors co-exist in perfect harmony with the natural environment and the wildlife that inhabits it.

Overnight at NGORONGORO SERENA SAFARI LODGE. (B,L,D)
www.serenahotels.com/serenangorongoro



DAY 7~TUESDAY~ JUNE 20

NGORONGORO CRATER

Today, enjoy the opportunity to visit the Ngorongoro Crater, a World Heritage site, an extinct volcano and the largest unbroken caldera in the world. The cone is believed to have collapsed nearly two million years ago, and while the cone was standing, it could have been as tall, if not taller, than Mount Kilimanjaro. The crater (1,800 feet deep and 102 square miles) is a microcosm of East African scenery with abundant wildlife – more than 25,000 larger animals, mostly zebra and wildebeest. This is also the best place in Tanzania to see magnificent black-maned lions.



This area offers an outstanding opportunity to see black rhinos, as they are protected around the clock. Over the years, the floor of this crater has become mostly savannah (grassland), with a soda lake whose size changes depending on the rains that are the lifeline of this amazing land. On this lake, marvel at the colorful flamingos and a variety of other water birds – more than 100 species of birds are found here that are not found in the nearby Serengeti. The resident ostrich, Crowned Crane, and Kori Bustard are joined seasonally by migrant flocks of White and Abdim's Storks. Patience may also reward you with glimpses of leopard, cheetah, hyena, jackal, elephant, warthog, impala, buffalo, hartebeest, eland and many other antelopes.

As you descend down the floor of the crater floor you might be able to see the local Maasai as they take their cattle down the steep walls of the crater. It is their right, negotiated with the government and parks authority, to graze their cattle in about 75% of the crater floor. The mix of cattle with the wild animals makes for some terrific photographs, and the interaction between domestic and wild animals is almost non-existent. Your wildlife viewing will be dramatic, and the experience memorable. Return to the rim of the crater six hours later (regulations now specify that no one can stay longer than six hours daily on the crater floor) and drive to your lodge. In one of the afternoons, you may opt to visit a Maasai village and learn about this fascinating culture that has existed through the millennia in perfect harmony with nature.

Overnights at NGORONGORO SERENA SAFARI LODGE. (B,L,D)



DAYS 8/9/10~WEDNESDAY/THURSDAY/FRIDAY~ JUNE 21/22/23
OLDUPAI GORGE/SERENGETI NATIONAL PARK

Your bumpy but scenic road takes you to Oldupai Gorge, where in 1959 Louis and Mary Leakey uncovered *Zinjanthropus* and *Homo habilis*. Oldupai is one of the world's most important paleoanthropological locations. Thousands of stone tools, some of which have been used by *Homo habilis*, have been found at Oldupai; the oldest style is easiest to remember, because it is called Olduwon. In addition to the remarkable human fossils – prehistoric elephant, giant horned sheep and enormous ostrich fossils have been found here while extinct species unearthed include three-toed horses and giant antelope. Since the Leakey's first began searching the area for clues to our distant past, more than sixty hominid remains have been excavated, belonging to four different hominids, showing the gradual increase in brain size and in the complexity of their stone tools. The gorge itself is a very steep-sided ravine roughly 30 miles long and 295 feet deep. It resembles a small Grand Canyon with exposed strata of different layers where the deposits of rich fossil fauna, hominid remains and stone tools were found. The gray lines are volcanic tuffs; eruptions are used to estimate the age of the fossils.



Continue with your safari adventure as you drive to Tanzania's most famous wildlife reserve, the Serengeti National Park (3,646,500 acres), the jewel in the crown of Tanzania's protected areas with over three million large mammals roaming its plains. It lies between Ngorongoro and Lake Victoria and adjoins Kenya's Maasai Mara. The Serengeti has come to symbolize paradise to all, including the local Maasai, who have grazed their cattle on the vast grassy plains for generations. To the Maasai, it is Siringitu – "the place where the land moves on forever." Today, the Serengeti National Park, the Ngorongoro Conservation Area, and the Maasai Mara Reserve across the border in Kenya, protect the greatest and most varied collection of terrestrial wildlife on earth, and one of the last great migratory systems still intact. More than a million wildebeest, accompanied by hundreds of

thousands of zebras and other herbivores, descend upon the short-grass plains of the southeastern Serengeti at the start of the rainy season around December. After calving in January and February, they scatter over the southern and central plains. By May the rain ends, the grass has been reduced to stubble, and the animals begin their long march to dry-season grazing grounds near the permanent waters of the Serengeti's northern woodlands and Kenya's Maasai Mara. Reaching these destinations by July or so, they remain until October, when they head back to the southeastern Serengeti. This struggle for survival continues unaided and unaltered through the millennia!

The Serengeti is incredible to visit any time of the year. Look up at the towering yellow fever trees for napping leopard and to the River at its hippo pools. Search for predators such as lion, leopard and cheetah, and their prey – giraffe, topi, Bohor reedbuck, Defassa waterbuck, buffalo, wildebeest and impala. The kopjes (prehistoric rock outcroppings) host hyraxes, dwarf mongoose, and red-headed agamas, while patience might reward you with a sleepy black-maned male lion or leopard. The open grassland is home to large groups of Thomson's and Grant's gazelles, spotted hyena, jackal, and such birds as the Double-banded Courser, Yellow-throated Sandgrouse, Red-capped Lark, Fischer's Sparrow-lark, and Capped Wheatear. Your twice-daily wildlife drives will allow ample viewing.



Your accommodation, the Serengeti Serena Safari Lodge, is set high on a hill with breathtaking vistas of sweeping grasslands and the unspoiled wild landscape of the Serengeti plains. The lodge design is simple but stunning. Inspired by a traditional African village, separate rondavel "huts" house the luxury guest rooms that have their own view of the vast Serengeti plains. From the overall impression to the smallest detail, the lodge is rich in local atmosphere created by indigenous handicrafts and art. A delightful water feature runs through the main public areas, creating a natural source of waterborne plants and provides a home to many native species of reptiles, amphibians and birds.

Overnights at the SERENGETI SERENA SAFARI LODGE. (B,L,D Daily) <https://www.serenahotels.com/serenaserengeti/en/default.html>



DAY 11~SATURDAY~ JUNE 24

ARUSHA/EN ROUTE

Transfer to Seronera airstrip this morning for your flight to Arusha where a dayroom is provided for your use at the ARUSHA SERENA. Later this evening, return to the airport for your overnight flights home. (B, Meals Aloft)

DAY 12~SUNDAY~ JUNE 25

ARRIVE LINCOLN

Today you arrive back home bringing with you the memories of all the wonderful sights of East Africa. (Meals Aloft)



OPTIONAL POST-EXTENSION TO ZANZIBAR



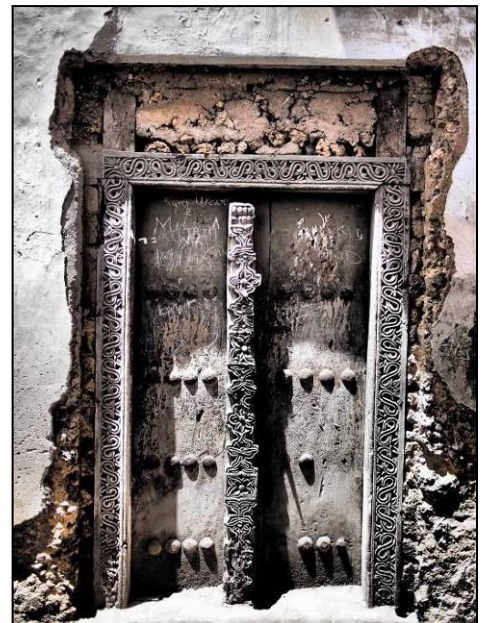
DAY 11~SATURDAY~ JUNE 24

ARUSHA/ZANZIBAR

Last chance to photograph that awesome sunrise before flying back to Arusha, where you bid farewell to your fellow tour members who are returning to the USA and embark on your adventure. Connect with your flight to Zanzibar, the best kept secret in the Indian Ocean, with its fascinating history and magnificent beaches. The Assyrians, Sumerians, Egyptians, Phoenicians, Indians, Chinese, Persians, Portuguese, Omani Arabs, Dutch and English have all been here at one time or another. Some, particularly the Shirazi Persians and Omani Arabs, stayed to settle and rule. With this influence, Zanzibar has become predominantly Islamic, with the remaining population made up of Christians, Hindus and Sikhs. The earliest visitors to Zanzibar were Arab traders who are said to have arrived in the 8th century. For centuries they sailed with the Monsoon winds from Oman to trade primarily in ivory, slaves and spices. The earliest building that remains on Zanzibar is the mosque at Kizimkazi which dates from 1107, and is a present-day tourist attraction.

Zanzibar has two main islands, Unguja (normally known as Zanzibar Island) and Pemba. Stone Town, located on Zanzibar Island, is the old city and cultural heart of Zanzibar, where little has changed in the last 200 years. It is a place of winding alleys, bustling bazaars, mosques and grand Arab houses whose original owners vied with each other over the extravagance of their dwellings.

This one-upmanship is particularly reflected in the brass-studded, carved, wooden doors – there are more than 500 different examples of this handiwork. Stone Town was recently and deservedly declared a World Heritage Site by UNESCO.



Begin to experience Zanzibar's fascinating history and vibrant culture with a tour of fabled Stone Town. Visit the House of Wonders, the Palace Museum (People's Palace), Dr. Livingstone's House, the Arab Fort, and the National Museum of Zanzibar, which houses relics from the times of the Sultans and early explorers. See Zanzibar's bustling market, winding alleyways, ornately carved and studded doors, two cathedrals and countless mosques. Visit the Anglican Church, built in 1874 on the site of the old slave market, and see the chambers beneath it where slaves were held before they were sold. You will see the site of Sultan Barghash's harem at Marahubi, with its colorful history. Stone Town also has many excellent gift shops with plenty of souvenirs and handicrafts to choose from.



Your home for the next two nights, the Zanzibar Serena Hotel, has joined the ranks of the world's finest resorts as a member of Small Luxury Hotels of the World. This stunning property is set in two historic seafront buildings that have been masterfully restored to their previous grandeur, when Zanzibar was a crossroads visited by travelers and merchants from all corners of the globe. Interiors echo Zanzibar's rich Arabic influence – or ustaarabu – as well as the island's indigenous East African roots. The rooms are elegant and romantic, each overlooking the azure waters of the Indian Ocean. There is a restaurant and bar as well as an outdoor swimming pool with poolside cafe bar and shop. An extensive selection of recreation and water sport activities are available to guests.

Overnight at the ZANZIBAR SERENA HOTEL (in standard rooms). (B, Packed L)

www.serenahotels.com/zanzibar/inn/home.asp



DAY 12~SUNDAY~ JUNE 25

ZANZIBAR~ SPICE TOUR & JOZANI FOREST

The history of Zanzibar would be incomplete without the cloves, nutmeg, cinnamon, pepper and many other spices which brought the Sultans of Oman and the beginnings of the infamous slave trade. This morning, you will visit a plantation and have your senses dazzled with fresh spices. A detailed description will be given about these spices and their uses in cooking and cosmetics. You will be fascinated by the sheer number of spices produced and their incredible value for many ailments. This is an excellent opportunity to purchase spices and spice oils at the best prices.



Drive to the Jozani Natural Forest Reserve, located in the central east region of Zanzibar Island and home to the rare red colobus monkey, endemic to Zanzibar (so named for a red spot on its head). These habituated monkeys are full of character and, although completely free, tend to feed just outside the reserve's perimeter. They are extraordinarily photogenic as they leap from tree to tree just above you. Jozani is home to other species including Syke's monkeys, small buck and bushpigs. The elusive Zanzibar leopard, last sighted several years ago, is said to feed here at night. (Perhaps this is why the reserve is only open during the day?) Jozani has an excellent nature trail and the guides are well-trained and informative.

Overnight at the ZANZIBAR SERENA HOTEL. (B)

DAYS 13/14~MONDAY/TUESDAY~ JUNE 26/27

ZANZIBAR~ CHUINI ZANZIBAR BEACH LODGE

Today you drive to your lodge by the sea and your home for the next two nights, Chuini Zanzibar Beach Lodge, where the remainder of the day is at leisure. Enjoy two days of decadent leisure as you relax at your own pace.

This beautiful lodge is situated on the west coast of the island, featuring unique charm, and is renowned for its great attention to detail and tasteful décor. Set on an Indian Ocean beach and surrounded by palm trees, this upscale hotel is 7.4 miles from Stone Town and 8 miles from the Old Fort of Zanzibar.

The lodge has 12 relaxed bungalows and one villa. All bungalows feature thatched roofs, white walls and linen, contemporary beach-style décor and natural wooden elements. Panoramic sea views can be soaked in from each unit. All bungalows are equipped with minibridges and free Wi-Fi. The al fresco restaurant serves culinary creations based on local cuisine. At the coffee bar, you will find a selection of cocktails, wines and tea. A swimming pool is featured onsite. Relaxing health and beauty spa treatments can be enjoyed in the exclusive Chuini Spa.

There are many opportunities for water activities here as well. Activities as canoeing, scuba diving and snorkeling are also provided at an additional cost. The island and its pristine surroundings can be explored from a different perspective on a boat in the Indian Ocean, upon request.

Overnights at the CHUINI ZANZIBAR BEACH LODGE. (B,D Daily)

<https://newmarkhotels.com/places/lodges/chuini-zanzibar-lodge/>

DAY 15~WEDNESDAY~ JUNE 28

ZANZIBAR/DAR ES SALAAM/EN ROUTE

Your final morning is at leisure to relax and enjoy this paradise. This afternoon transfer to the airport for your flight to Dar es Salaam, where you connect with your flights to Amsterdam and home. (B, Meals Aloft)

DAY 16~THURSDAY~ JUNE 29

ARRIVE LINCOLN

Arrive the USA, bringing with you the memories of all the wonderful sights of East Africa. (Meals Aloft)



OPTIONAL PRE-EXTENSION TO TSAVO & AMBOSELI, KENYA



DAY 1~THURSDAY~ JUNE 8

LINCOLN/EN ROUTE

Your journey begins as you board your flights en route to Nairobi. (Meals Aloft)

DAY 2~ FRIDAY~ JUNE 9

NAIROBI

Upon arrival you are welcomed by your Classic Escapes expert driver/guide and naturalist and escorted to your luxurious hotel. The remainder of your evening is at leisure.



Located within a pleasant forested area overlooking the second hole of a golf course, The Residences at Karen embody comfort, luxury and serenity, perfect for any getaway. The Residences at Karen, is truly your home away from home offering all the luxuries of a five-star hotel, with special personalized service, a relaxed atmosphere and great attention to detail. A team of professional staff is eager to serve you and anticipate your every need. The Residences host six cottages and twelve apartment suites. The stunning cottages have two spacious bedrooms with its own accessible door from outside and a luxuriously furnished living room with a beautiful stone fire place, service area, dining area, and furnished terrace. All rooms are equipped with modern amenities.

Overnight at THE RESIDENCES AT KAREN in cottage rooms. (Meals Aloft) www.theresidences.or.ke

DAY 3~SATURDAY~ JUNE 10

NAIROBI

Your day begins with a visit to the Karen Blixen Museum, the former home of the Danish Baroness, Karen Blixen (1885-1962) author of the book *Out of Africa*. Karen lived in this green residential area from 1914 to 1931 when she left permanently for Denmark. The house was built in 1910 and when Ms. Blixen bought the property, it had 6,000 acres of land but only 600 acres were developed for growing coffee; the rest was retained under natural forest. The house was bought by the Danish Government, which offered it back to Kenya in 1963. In 1986, the house, formerly used as a school, was transformed to a National Museum. Much of the original furniture is on display in the house and most objects were either used by Karen herself or for the shooting of the film, "Out of Africa."



Continue to The Sheldrick Wildlife Trust at the edge of Nairobi National Park, which is a nursery and rehab center for infant elephants that have lost their families, as well as rhino and occasionally zebras and other wildlife. Daphne Sheldrick was the first person to successfully master the art raising orphaned infant elephants. The wife of the famous naturalist David Sheldrick, Daphne had dedicated her life to conservation. David was founder Warden of Kenya's giant Tsavo East National Park, in which he served from 1948 until his death in 1976. Daphne continued her involvement till her death in April 2018 and had a real impact on the lives of elephants and rhinos, which would have normally died due to human poaching and surrounding population conflict. Their daughter, Angela, now continues this most important work. You'll enjoy a visit with the elephants as they're brought by their keepers to the waterhole and salt lick to be fed and socialize – see how they roll in the mud and play fight, and their affectionate interaction with their keepers. Learn the habits of the orphans and many interesting facts about their upkeep. These infants are eventually released into the wild at Tsavo East National Park and end up in the care of other orphans who have been successfully reintroduced to the wild.



Enjoy lunch and resume your sightseeing to the African Fund for Endangered Wildlife (AFEW Kenya) Giraffe Centre near Giraffe Manor where you may hand-feed the Rothschild giraffe that live here. The giraffes were brought here by Jock and Betty Leslie-Melville, who founded AFEW and built the Giraffe Centre to help educate young African children about wildlife conservation. The Rothschild giraffe are the tallest species and may reach 18 feet in height, but you can see eye to eye with them on the elevated walkway at the center.



Your final stop is at the Kazuri Bead Factory, founded by Lady Wood, widow of the founder of the East African Flying Doctor Service, later known as the African Medical Research Foundation, Michael Wood. All of the beads and pottery in the shop are designed and created by mothers who would not otherwise have employment. The quality and beauty of designs has made the factory a favorite of locals and visitors alike.

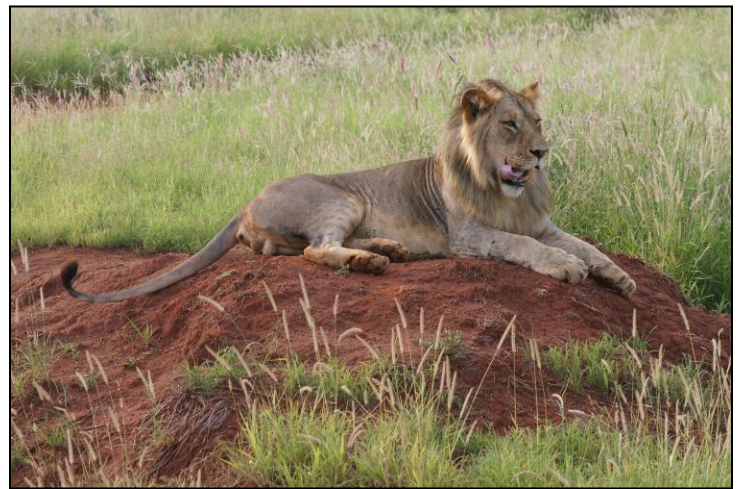


Your welcome dinner has been prepared for you at the Carnivore Restaurant. Carnivore's specialty is meat, and features an all-you-can-eat meat buffet. Every type of meat imaginable is roasted on traditional Maasai swords (skewers) over a huge, visually spectacular charcoal pit that dominates the entrance of the restaurant. Overnight at THE RESIDENCES AT KAREN in cottage rooms. (B,L,D)

DAYS 4/5~SUNDAY/MONDAY~ JUNE 11/12

TSAVO WEST NATIONAL PARK

Your drive takes you to Tsavo West National Park (*an optional flight from Nairobi to Tsavo West is available at a cost of \$450 per person.*) At just over 8,000 square miles, Tsavo is the largest national park in Kenya and one of the largest in the world. Because of its size, the park was split into two, Tsavo West and Tsavo East, for easy administration. Located midway between Nairobi and the coast, the area boasts volcanic hills, four rivers, more than 60 major mammal species and 1,000 plant species. The northern part of Tsavo West is the most developed and has spectacular scenery with a rolling volcanic landscape carpeted in long grass and dense bush. Although the tall vegetation makes game spotting trickier than in some of the other parks, Tsavo West's bio-diversity is amazing.



The landscape is a mixture of grassland and forest shrub vegetation. Thus, driving and exploring the vegetation almost assures you close encounters with the following animals: lions, leopard, cheetah, zebras, giraffes, antelopes, kongoni, waterbuck, klipspringer, impala, gazelles, buffalos, and elephants. Apart from Tsavo's elephant population, there are many lion – some undoubtedly the descendants of the infamous and feared "Man-eaters of Tsavo" popularized in the film *The Ghost and the Darkness*. In addition to lion, the resident carnivores in Tsavo include serval, hyena, leopard, cheetah, and caracal. The landscape is dominated, especially off the hills, by the giant baobab, a tree that is reputed to live 1,000 years.

Tsavo West is famous for the Mzima Springs. This star attraction is a pool of natural spring-water with underwater viewing hides for observing hippos where a gushing supply of fresh, crystal-clear water has created an oasis for wildlife. A specially constructed underwater observatory provides visitors with a unique view into the underwater world of Mzima. The water catchment is divided into two pools; here you can view hippos and crocodiles. The upper pool is occupied by the hippos and lower pool by the crocodiles.



While here, you will have the chance to learn about the Maasai way of life and how they have co-existed through the millennia with the wildlife, as you visit a Maasai village, a Manyata.



The first lodge ever to be built in a Kenyan National Park, Kilaguni Serena Safari Lodge is superbly situated in the lee of Mount Kilimanjaro, encircled by volcanic splendor, adjacent to a teeming waterhole and daily visited by vast herds of elephant, buffalo and plains animals. Inspirationally positioned so that not only all the rooms but also the open-air restaurant, timbered viewing decks and rock-built bar enjoy uninterrupted views of the legendary snows of Kilimanjaro. The lodge also stands central to miles of lion-stalked grasslands, elephant-studded plains and wildlife-teeming bush and is ideally placed for visits to all the park's prime attractions. Faced in volcanic stone and utilizing the natural rocky outcrops of a valley known as 'the place of the young rhino', from which it takes its name, the lodge has been designed to blend chameleon-like into the savannah landscape. Cool, tranquil and hushed for optimum wildlife-viewing, the open-air dining area, timbered decks and rock-hewn bar blend the traditional "khaki-and-canvas" look with bright-painted banners, sepia-hued paintings and evocative olive-wood carvings of elephant herds and tail-erect warthogs. The elegantly renovated rooms draw on a sun-gold, sky-blue and bush-green savannah color palette and have been so styled to provide world-class luxury and a quintessential African aura while featuring private verandahs with views of eternity.

Overnights at KILAGUNI SERENA SAFARI LODGE. (B,L,D Daily)

Approximate driving time from Nairobi to Tsavo West: 5 hours.

DAYS 6/7~ TUESDAY/WEDNESDAY~ JUNE 13/14

AMBOSELI NATIONAL PARK / MOUNT KILIMANJARO

Today's drive takes you to Amboseli National Park located at the foot of Africa's highest mountain, Mount Kilimanjaro. The snow-capped peak of Mount Kilimanjaro rises above a saucer of clouds and dominates every aspect of Amboseli. This Park covers only 150 square miles but despite its small size and its fragile ecosystem, it supports a wide range of mammals (well over 50 of the larger species) and birds (over 400 species). Years ago, this was the locale around which such famous writers as Ernest Hemingway and Robert Ruark spun their stories of big-game hunting in the wilds of Africa. This too, is part of Maasailand, and it's not unusual to see the proud Maasai warrior or small children tending their cattle as you traverse their territory. In this land, animal and man have learned to coexist and thrive together, despite the harsh conditions. This is also the park that has been made famous by Cynthia Moss, the noted American naturalist and author who has one of the longest-running studies on elephants. You might even see some of the elephants that Cynthia has immortalized in her many books and award-winning film *Echo of the Elephants*.



In the shadow of Mount Kilimanjaro, beside a copse of giant acacia trees and a gently flowing natural spring, stands Amboseli Serena Safari Lodge. With Kilimanjaro's 19,340-foot snow-capped summit presiding over the landscape, the setting is unrivalled. All around the lodge roams the wildlife that has made East Africa legendary – lion, buffalo, cheetah, giraffe, baboon, gazelle, and wildebeest. Influenced by native Maasai architecture, the lodge is in perfect harmony with its environment. Beautifully landscaped gardens, unique guest services and exceptional amenities enhance the distinctive ambience.



The uniquely constructed ivory class guest rooms – 96 in total – with en-suite bathrooms, individually appointed with authentic Africana and murals painted by a renowned local artist, convey a distinctive Maasai Manyatta mood. Grouped in the manner of a Maasai village, each room enjoys a view of either majestic Mount Kilimanjaro or the expansive Amboseli plains, which are home to herds of elephant that feed on the large, feathery acacia trees. Overlooking the saltlick and floodlit waterhole, the open-air dining room serves guests sumptuous international menus, buffets and barbecues alongside authentic African dishes. A full-service bar and refreshing outdoor pool are some of the other luxuries one is expected to find at this lodge. Overnights at the AMBOSELI SERENA SAFARI LODGE. (B,L,D Daily) www.serenahotels.com/kenya/amboseli/home.asp Approximate driving time from Tsavo West to Amboseli: 3 hours.

DAY 8~ THURSDAY~ JUNE 15

AMBOSELI/ARUSHA

Today's drive takes you to the Namanga border where you cross into Tanzania and continue to Arusha where you meet up with the group arriving from the US today. (B).



OPTIONAL BALLOON SAFARI IN THE SERENGETI & AMBOSELI NATIONAL PARKS

Your exhilarating balloon safari is the most amazing way to experience the wildlife. Your early morning ride allows for an hour of uninterrupted wildlife views from the air – definitely the best way to see the migration when in season as well as the incessant movement of animals and the fabulous vistas of Tanzania. During the flight, you will ascend to a high altitude to take in an amazing panoramic view and then descend to treetop level and silently glide above the wildlife below.

From the sunrise to the East, the magnificent Mt. Kilimanjaro to the south, and the Amboseli National Park immediately to the north, you will see a full array of wildlife, including the area's renowned elephant herds. From the air, see the Maasai manyattas and varied topography of Amboseli, and relish the feel of floating as the earth comes alive and the sky is painted with colorful strokes at sunrise.

Upon landing, enjoy a champagne brunch, set especially for you in the middle of the plains. Zebra and elephants may be your dining guests, and Africa's colorful birds may vie for a crumb of your bread.

At present, the costs are as follows:

- Serengeti with collection from your lodge – Serengeti Serena: \$599 per person (currently, subject to change)
- Amboseli with collection from your lodge – Amboseli Serena: \$450 per person (currently, subject to change)

Reservations for this excursion are necessary before departure from the USA, if you wish to be guaranteed a seat. Full payment must be forwarded to CLASSIC ESCAPES INC. 191 W Poplar Street, Floral Park, NY 11001 to be received at least three weeks prior to departure. If your trip does not materialize due to weather or other reasons, your payment will be refunded upon returning to the U.S.A. However, if you should cancel for any reason, payment is non-refundable.



INCLUSIONS

- Flights within Africa as specified. On the main safari in Tanzania: Serengeti to Arusha.
- Superior accommodations throughout as indicated or similar.
- All meals on safari in Tanzania; all other meals as specified.
- All wildlife viewing by private 4X4 vehicle with photo roof, driven by a specialist guide. A window seat is guaranteed.
- Visit to a Maasai village.
- Complimentary bottled water in vehicles and during meals.
- Robert Marks Moshi will accompany the group with 10 travelers on the main program and either extensions..
- John Chapo will accompany the group with a minimum of 10 travelers on the main program and 10 travelers on each extension.
- All applicable hotel and lodge taxes and gratuities for baggage handling.
- All Park entry fees.
- Complimentary luggage tags and water bottle.
- Complimentary emergency evacuation insurance.

EXCLUSIONS

- Round trip air transportation between Lincoln and Arusha including taxes and fuel surcharges (quoted separately). Pre-extension arrives in Nairobi and the post extension returns from Dar es Salaam.
- Passport and visa fees and service charges for obtaining visas. Visas are currently required for Tanzania and Kenya.
- Excess baggage charges levied by airlines.
- Gratuities to drivers/guides/naturalists and other conveyance attendants. *Gratuities should only be given as a reward for exceptional service and is at your discretion. We estimate \$12 per person/per day for the naturalist guide. \$12 per person/per day for the safari driver. \$5 per person/per day for the camp staff. \$3 per person for each arrival and departure transfer from the airport /hotel. These are daily per service estimates and an exact tipping chart will be detailed on your final itinerary.*
- Meals and beverages, other than specified.
- Laundry and other items of a personal nature.
- Personal and baggage insurance.
- Cost for anything not specifically mentioned in the listing above.

Please Note That The Itinerary Sequence Is Correct At The Time Of Writing, But Is Subject To Change.



THINGS YOU NEED TO KNOW ABOUT TANZANIA

Participants

- Participants must be able to climb in and out of safari 4x4 vehicles or minibuses and small aircrafts unassisted. They should also be able to tolerate riding on uneven, bumpy dirt roads for long periods of time (6-9 hours maximum), as well as some off-road experiences when opportunities allow.
- Participants should also be able to stand and / or walk moderate distances at an easy pace for up to a few hours at a time when visiting villages, towns or other sites. Some, if not most, of this walking may be on uneven ground or uphill, often at higher elevations and altitudes that many people are not used to.

In general, this trip requires:

- Flexibility and good humor – unexpected changes and/or glitches will occur
- A spirit of adventure and curiosity
- Interest in and willingness to appreciate a destination with uneven infrastructure and a bending definition of comfort. That being said, some locations are nestled in absolute luxury where pampering is the norm.

Air Schedules

Choosing the best possible air arrangements for our travelers is always a challenge. We work with many airlines that offer the best level of service, routings and value for our programs. While there may indeed be more direct routings available with another airline, the cost of these flights may not be within the budget that allows us to give you the best value possible. If you prefer to purchase your own international air, please feel free to choose the “land only” rate for this program. **The start and end city for the land only program is Arusha, Tanzania. The post extension returns from Dar es Salaam.**



SAFARI AIR LUGGAGE RESTRICTIONS

It is of vital importance that all guests traveling to Tanzania and Kenya strictly adhere to the luggage limits and regulations as stipulated below.

Please note:

LUGGAGE WEIGHT LIMIT PER PERSON *	33 Lbs. (15 kg) – total weight inclusive of luggage and hand luggage/camera equipment. Carry-ons may not weigh more than 4 lbs. (2 kg)
LUGGAGE TYPE	Soft sided (all sides) bags – no hard-shelled bags or frames allowed. Wheels should be avoided.
LUGGAGE DIMENSIONS**	12 inches wide x 10 inches high x 24 inches long.

**This is the total weight including both luggage and hand luggage/camera equipment.*

This is a safety requirement due to the sensitive weight and balance checks on the small aircraft and must be strictly adhered to. Travelers who require additional luggage must pre-book and pay for this on confirmation of the reservation. We would like to remind you that laundry services are available in all camps and lodges.

****Please keep in mind that the baggage compartments on most of the light aircraft are only 25cm (10 inches) high, so the pilots must have the ability to manipulate the bag into the compartment.**



SOFT SIDED

NOT PERMITTED



BAGS PERMITTED



HARD SIDED BAGS

HANDLING OF INCORRECT LUGGAGE ON ARRIVAL

The carriage of excess baggage is at the sole discretion of the Company after taking into consideration the aircraft being used and the number of passengers booked. When excess baggage is carried it will be charged at the prevailing rate. Excess luggage is charged at USD \$3.00 per kilogram. Guests who are unable to depart on the scheduled charter will be given the option to book a private charter at additional costs to be paid directly prior to departure and subject to the availability of aircraft at the time of booking these flights. No refunds on the costs paid for scheduled charters which were missed due to their incorrect luggage and or accommodation not provided due to this delay will be provided. In all cases, additional arrangements for transfers, overnight accommodation in the Serengeti or Arusha and meals are on the guests' own account.

ASSISTANCE WITH BAGGAGE PRIOR TO ARRIVAL

Should guests be travelling with the incorrect luggage and require assistance with storage (which we offer at no additional cost) or transportation to their point of departure from Tanzania or Uganda (transportation costs apply), this can be arranged provided this has been bought to our attention prior to their arrival in Tanzania/Kenya, preferably at the time of final booking confirmation.

BRING-A-BOOK FOUNDATION

Your safari will include a visit to a local school. We encourage you to bring colorful books and magazines, as well as schools supplies such as pens, paper, crayons, soccer balls, etc., which you can present to the children during your visit. Many of these children have never owned a book in their life and the connection you'll make with them is invaluable. You'll find that children in the schools are eager to meet with visitors, practice their English, learn about your culture and proudly share their own. You are often welcomed with a local song or dance.

After seeing schools first hand, meeting the dedicated teachers working under the most difficult conditions and children hungry for knowledge, many travelers have wanted to help the schools they visited or continue to support a child's learning opportunities after they return to their homes. Bring-A-Book is an innovative effort adopted by Classic Escapes to expand education opportunities for school children. The Bring-A-Book Foundation is a registered Kenyan Charitable Trust that was created as a way to facilitate travelers' wishes to help the schools and is used to get books into the hands of children as quickly and economically as possible. With compassionate ground operators such as Rangers Safaris, Wilderness Safaris and &Beyond, Classic Escapes has expanded the reach of BAB to Tanzania, South Africa and Zambia, and to other countries our travelers visit around the world. Information will be given to you with your final documents, but if you wish to help further, feel free to call Classic Escapes at 800-627-1244 for details.



CLASSIC ESCAPES CONSERVATION FUND

In keeping with our mission to provide exciting, educational, and fun-filled experiences that nurture and directly support the diverse wildlife and cultures we visit around the world, Classic Escapes has established the Classic Escapes Conservation Fund to ensure that a percentage of all profits go to support conservation and wildlife researchers performing their critical work in the field. Project support has included wild dog, elephant, rhino and cheetah conservation in Botswana, Kenya, Tanzania and Namibia, penguins in Punta San Juan Peru, tiger preservation in India, and sponsoring school children in Kenya, among many other projects around the world. By traveling with Classic Escapes, you are supporting travel as a tool for building the mutual respect, awareness and understanding that are vital to preserving this planet for future generations.

YOUR JOURNEY AT A GLANCE

INCLUDING: ARUSHA, TARANGIRE NATIONAL PARK, LAKE MANYARA NATIONAL PARK, THE NGORONGORO CRATER, THE OLDUPAI GORGE, & SERENGETI NATIONAL PARK.

SPONSORING ORGANIZATION: LINCOLN CHILDREN'S ZOO

ESCORTED BY: JOHN CHAPO, DIRECTOR, LINCOLN CHILDREN'S ZOO

DATES: JUNE 14 TO 25, 2023

<u>COSTS:</u> PER PERSON, BASED ON DOUBLE OCCUPANCY	MAIN TOUR BASED ON 10 TRAVELERS	POST EXTENSION TO ZANZIBAR BASED ON 10 TRAVELERS	PRE-EXTENSION TO KENYA BASED ON 10 TRAVELERS
LAND ONLY COST ADULT RATE CHILDREN UNDER 12 YEARS SHARING WITH PARENTS	\$8,995 PER PERSON \$3,995 PER PERSON	\$2,795 PER PERSON \$1,995 PER PERSON	\$3,195 PER PERSON \$2,395 PER PERSON
SINGLE ROOM SUPPLEMENT* FIRST TWO SINGLES 3 RD OR MORE SINGLES	\$1,295 PER PERSON \$2,995 PER PERSON	\$595 PER PERSON \$1,295 PER PERSON	\$395 PER PERSON \$995 PER PERSON
INTERNATIONAL AIR FROM LINCOLN, ROUNDTrip ECONOMY, INCLUDING ESTIMATED TAXES & FUEL SURCHARGES (CURRENTLY, SUBJECT TO CHANGE)**	\$2,490 PER PERSON	N/A	N/A

* SINGLE SUPPLEMENTS ARE VALID FOR FIRST TWO SINGLE ROOMS BOOKED. IF MORE THAN TWO SINGLE ROOMS, ADDITIONAL SUPPLEMENT WILL APPLY AS PER ABOVE. SINGLES ARE ASSIGNED ON A FIRST COME/FIRST SERVE BASIS.

ALL INTERNATIONAL AIRFARES ARE SUBJECT TO CHANGE AND BASED ON MINIMUM OF 10 TRAVELERS. TAXES ARE SUBJECT TO CHANGE UNTIL TICKETED. IF LESS THAN 10 TRAVELERS, THE FARE WILL INCREASE & SUPPLEMENTAL COSTS WILL BE GIVEN TO THE TRAVELERS PRIOR TO ISSUING THE TICKETS, APPROXIMATELY TWO MONTHS PRIOR TO DEPARTURE. **NOTE THAT THE SPECIAL RATES NEGOTIATED BY CLASSIC ESCAPES ARE NOT UPGRADABLE.

DEPARTURE CITY: LINCOLN (OTHER DEPARTURE CITIES AVAILABLE UPON REQUEST)



CONDITIONS OF TRAVEL:

The purchase of your travel booking constitutes a contractual agreement between the traveler(s), customer(s), and/or purchaser(s) (collectively as "You" and "Traveler"), and Classic Escapes ("Classic Escapes", "We", "Us") pursuant to the following terms and conditions ("Terms", "Agreement"):

REGISTRATION & PAYMENTS

HOW TO BOOK: Fill out and sign the enclosed reservation form and send it, along with the relevant deposit as shown below, to: CLASSIC ESCAPES, 191 W Poplar Street, Floral Park, NY 11001 Upon receipt of your signed reservation form and deposit, we will, subject to availability, reserve your spot on the tour. You may consider your booking confirmed when you receive a confirmation notice and invoice from us.

DEPOSIT AND FINAL PAYMENT: You will be required to pay the following per person deposits when booking. Those amounts are:

- \$1,800 for the main trip
- \$600 for the pre-extension
- \$650 for the post extension

All deposits are subject to the Cancellation policy herein. Final payment is required no less than 95 days prior to departure (March 11, 2023) unless otherwise stated. Some airfares or services must be paid in full at the time of booking. Deposits may be paid by check, wire transfer or credit card (American Express, Visa, MasterCard, or Discover). Final payment is payable by check, wire transfer, or money order ONLY. Conditioned on receipt of final payment in full, all final documents and air tickets will be sent to you approximately two weeks prior to departure.

CREDIT CARD TRANSACTIONS: If for any reason, any travel service provider is unable to provide the services for which you have contracted, your remedy lies against the provider, and not against Classic Escapes, and in the event that payment has been made to Classic Escapes by credit card, you agree that you will not seek to chargeback your payment to Classic Escapes. If the credit card is passed through to the travel service provider and you seek to chargeback your payment from the provider, you agree to be held liable and indemnify Classic Escapes against this chargeback from the provider, including without limitation any air debit memos charged to Classic Escapes. If the credit card is declined, you guarantee that you will settle any amounts owing to Classic Escapes via money order or cash immediately. Except in cases of fraud, you agree not to file any dispute with your bank or credit card company to avoid or violate any booking terms and conditions of Classic Escapes or its suppliers, including cancellations or changes of itinerary or arrangements for reasons beyond the control of Classic Escapes or its suppliers. If you attempt to chargeback, reverse, or recollect a previously authorized trip payment, Classic Escapes reserves the right to collect all additional costs, fees and expenses associated with such chargeback, reversal, or recollection, including, without limitation, attorney fees.

IMPORTANT CONDITIONS: Prices are subject to increase prior to the time you make full payment. Prices are not subject to increase after you make full payment, except for charges resulting from increases in government-imposed taxes or fees. By signing the reservation form, you expressly acknowledge your acceptance of these conditions (i.e., increases before full payment and increases attributable to government-imposed taxes or fees after full payment will be your responsibility) applicable to your purchase.

RATES: Rates are based on the minimum number of guests outlined in this document, plus airfare costs, currency exchange rates and other factors and are subject to change. Though it is rare for Classic Escapes to make a price adjustment after promotion of an itinerary, we do reserve the right to assess a surcharge if the minimum is not met, or if increases are forced upon us by airlines or other partners or because of changes in currency exchange rates.

ADDITIONAL FEES: Additional taxes and surcharges that cannot be pre-collected may be charged locally. Cost of passport and visa fees and service charges for obtaining visa fees; excess baggage charges levied by airlines; laundry and other items of a personal nature; optional travel insurance policy(s); or any other costs incurred that cannot be pre-collected are NOT included and are the sole responsibility of the Traveler.

SINGLE SUPPLEMENT: The quoted rate is valid for the first two single rooms booked and on a first-come, first-served basis. If more than two single rooms are needed, an additional supplement may apply. Single accommodations are not guaranteed but will be provided at additional cost if available (see 'Your Journey at a Glance' section for the cost.) The single room supplement pays for privacy, not better accommodations. For passengers who are traveling alone and wish to share a room with another tour member, we will do our best to provide a roommate. However, if this is not possible, you will be required to pay the single room supplement prior to your departure from the USA.

GRATUITIES, ENTRANCE FEES & TAXES: Gratuities for baggage handling, service charges and taxes imposed by hotels, and entrance fees to all points of interest as outlined in the itinerary are included in the final cost. U.S. and foreign airport taxes are included in air costs. Tips to drivers and specialist guide(s) are **not** included and are the sole responsibility of the Traveler.

CANCELLATIONS, DEVIATIONS & CHANGES

TRAVEL INSURANCE: We recommend travel insurance. Travel insurance can provide financial reimbursement should the unexpected occur.

BOOK WITH CONFIDENCE: Book any scheduled group tour and you may cancel your trip, for a full refund of your initial deposit, if the request is made within 30 days of your booking date. Bookings canceled after this grace period will be subject to a \$300 handling fee for up to 6 months prior to departure date. After that, standard terms and conditions are applicable. *Deposit back guarantee applies to NEW bookings only, and is not applicable to tours departing within six months of booking date. Cancellations are only effective upon receipt of written notification.*

FLEXIBLE BOOKING: Effective January 1, 2021 until December 31, 2022, book any group trip with us departing in 2022 and/or 2023, and you may cancel or change up to 95 days prior to your departure date with no charge when you rebook another tour and/or reschedule your trip to a later date. (Later date must be within two years of initial departure date.) If the rebooked tour is higher than the original tour, the traveler will be responsible for the difference; if the rebooked tour is lower than the original tour, the traveler will receive a credit toward future travel to be used for up to two years from the date of rebooking. Travelers who cancel without rebooking will receive a credit toward future travel valid for up to two years from the date of cancellation; credit is non-transferable and non-refundable.

The following exclusions apply and are subject to standard terms and conditions:

- This policy applies to NEW bookings only.
- This policy does not apply to tours requiring non-refundable permits, including, and not limited to Rwanda and Uganda gorilla trek permits, Inca Trail permit, etc.; standard terms and conditions are applicable.
- This policy does not apply to private or Tailor-Made bookings; standard terms and conditions are applicable.
- This policy does not apply to airfare or insurance. Any airline change or cancellation fees are solely the responsibility of the traveler and are subject to airline policies.
- No refunds or credits will be provided in respect to any visas, travel insurance, or vaccines, which are solely the responsibility of the traveler.

These special terms are subject to change and can be withdrawn at any time.

CANCELLATION: Please be aware that most travel bookings are non-refundable and cancelled bookings will incur charges. These charges can be up to 100% of the cost of the booking, regardless of whether travel has commenced. Where we incur any liability for a cancellation fee or charge for any booking that you cancel, you agree to indemnify us for the amount of that fee or charge. Cancellations are only effective upon receipt of written notification. The following per-person fees are applicable; however, depending on the specific itinerary or other factors, we may require a non-refundable deposit:

- Up to 6 months prior to departure (December 16, 2022), \$300 per person administrative fee.
- 6 months to 96 days prior to departure (December 17, 2022 to March 10, 2023), \$300 per person administrative fee, plus \$500 non-refundable deposits given to suppliers.
- 95 days to 76 days prior to departure (March 11 to March 30, 2023), deposit is forfeited.
- 75 days to 60 days prior to departure (March 31 to May 15, 2023), 50% refund is possible.
- 59 days or less prior to departure (May 16, 2023), no refund is possible.

These cancellation fees are also in addition to any fees imposed by airlines.

REFUNDS: While Classic Escapes uses its best endeavors to ensure that all anticipated accommodation is available as planned, there is no claim of any nature whatsoever against Classic Escapes for a refund, in whole or in part, if any accommodation or excursion is unavailable and a reasonable alternative is not found, or if the Traveler is unable to use any service provided in the itinerary.

CHANGES: Once your tour is reserved, changes to the itinerary are possible subject to the availability of air or land space at the time of your request. Should there be any change fees imposed by any airlines or ground operators, or additional costs incurred due to the availability of any space, these costs will be invoiced to you and you will be responsible for payment thereof.

SPECIAL ARRANGEMENTS: Should you wish to make additional travel plans, including specially arranged pre- or post-tour extensions different than those offered in conjunction with your tour, a service charge of \$150 per person (over and above the cost of the services required) will be assessed.

DOCUMENTS

PASSPORTS: All individuals departing from the United States of America must be in possession of a valid passport. Please check that your passport is valid for at least 6 months beyond your intended return date. It is your responsibility to ensure that you have valid

travel documentation, including but not limited to passports and visas, which meet the requirements of immigration and other government authorities at every destination. You are responsible for confirming with the United States Department of State or the representative government agency of the country to which you are traveling to confirm the requirements for visas and/or other requirements for admission to your destination. Any fines, penalties, payments, or expenditures incurred as a result of such documents not meeting the requirements of those authorities will be your sole responsibility.

REAL ID: Beginning October 1, 2021, if you plan to use your state-issued ID or license to fly within the U.S., it is your responsibility to make sure it is REAL ID compliant. If you are not sure if your ID complies, please check with your local state Department of Motor Vehicles or visit www.tsa.gov/real-id.

TRAVEL DOCUMENTS: It is the responsibility of each Traveler to obtain and carry a valid passport, visa(s), and all other documents required by applicable government regulations. When traveling domestically or internationally, the U.S. Transportation Security Administration (TSA) and U.S. Department of Homeland Security (DHS) advise that everyone carry acceptable identification in order to board a flight. Acceptable identification can be found at <http://www.tsa.gov/traveler-information/acceptable-ids>. The name, date of birth and gender that appears on the identification card must exactly match the same such data that is listed on airline ticket(s) and booking records. You acknowledge any failure to strictly comply with these requirements may result in denied boarding or an undue delay at an airport security checkpoint causing Traveler to miss flight(s), and subsequent scheduled travel bookings on cruises and tours.

Travel documents include, without limitation, airline tickets, hotel vouchers, tour vouchers, or any other document (whether in electronic form or otherwise) used to confirm an arrangement with a service provider. Travel documents may be subject to certain conditions and/or restrictions such as, but not limited to, being non-refundable, non-date-changeable, and subject to cancellation and/or amendment fees. Travel documents cannot be transferred to another person to use. All airline tickets must be issued in the name of the passport/photo identity holder. An incorrect name on a booking may result in an inability to use that booking and the booking being cancelled. Any errors in names, dates, and timings may result in an inability to use that booking and the booking being cancelled. Any errors in names, dates, and timings on your documentation will be your responsibility if we are not advised at the time of booking. Please reconfirm your flights at least 24 hours prior to departure.

PRE-DEPARTURE INFORMATION: Upon receipt of your registration and deposit, we will send you an electronic pre-departure packet containing all the information you need to prepare for your tour, including the complete itinerary, packing checklist, required documents, insurance information, etc.

FINAL DOCUMENTS: Electronic final documents and air e-tickets will be sent to you approximately two weeks prior to departure, provided all monies have been paid in full.

TRANSPORTATION

AIR TRANSPORTATION: Your program offers the ability to purchase at additional cost roundtrip, economy-class flights between (SPECIFY CITY), and the destination city noted in the itinerary. Rates are based on special promotional fares; cancellation fees apply once tickets are issued. Departures from other cities in the USA are possible at additional cost; inquire at the time of reservation. Please note that these promotional fares are subject to 10 passengers traveling together on the same airline routing and itinerary. If this minimum is not met, the special group rates are not applicable, and it might become necessary to issue instant purchase tickets earlier than when final payment is due in order to take advantage of airfares that are similar to the group rates. Should this occur, you will be contacted with the details.

AIRLINE SEATING: We request seats together for the group wherever possible. All planes are non-smoking. We can request a seating preference on your behalf, however requested seats cannot be guaranteed. Requests should be made in writing no later than 60 days prior to departure. Bulkhead and/or emergency row seats can only be requested at airport check-in on the day of departure. Classic Escapes cannot provide the **Comfort Seating Service** as this is available on specific flights subject to availability and commercial laws as determined by each airline and at their own discretion. Boarding passes are generally issued at the airport on the day of departure, or in some cases if you pre-check yourself 24 hours prior to departure. You may inquire about seat changes during check in at the airport, based on availability and is at the sole discretion of airline staff.

FREQUENT FLYER MILEAGE: Check on the airline's website to enquire who their partners are. Obtain frequent flyer mileage on any of these carriers. Present your frequent flyer card for all flight check-ins and keep the boarding passes until you receive a statement with the mileage credit.

TRANSFERS: Roundtrip airport transfers are included in the tour for guests arriving on group flights. If travelers make their own air arrangements, they will be subject to extra transfer fees.

FLIGHT CONFIRMATION: We strongly suggest that you reconfirm exact flight times with the carrier prior to departure. Air travelers are required to check in at least 2 hours prior to departure time for domestic flights and 3 hours for international flights and must report to the gate at least 30 minutes prior to departure time. Failure to comply may result in the loss of the seat to another passenger.

HAZARDOUS MATERIALS: Federal law prohibits passengers from bringing hazardous materials on the aircraft. Federal law forbids the carriage of hazardous materials aboard aircraft in the passenger's luggage or on the passenger's person. A violation can result in five years' imprisonment and penalties of \$250,000 or more (49 U.S.C. 5124). Hazardous materials include explosives, compressed gases, flammable liquids and solids, oxidizers, poisons, corrosives, and radioactive materials. Examples: Paints, lighter fluid, fireworks, tear gases, oxygen bottles, and radiopharmaceuticals. There are special exceptions for small quantities (up to 70 ounces total) of medicinal and toilet articles carried in the passenger's luggage and certain smoking materials carried on the passenger's person. For further information, each passenger should contact the relevant airline representative(s) on their itinerary. Restrictions on hazardous materials are listed <http://www.tsa.gov/traveler-information/prohibited-items>.

INSECTICIDE NOTICE: Some countries require insecticide spraying of aircraft prior to a flight or while you are on the aircraft. We recommend that you refer to the Department of Transportation's list of airports in countries that require airlines to treat the passenger cabin with insecticides prior to the flight or while on the aircraft available at <https://www.dot.gov/office-policy/aviation-policy/aircraft-disinsection-requirements>.

BAGGAGE & FEES: Additional fees for baggage may apply. Please contact your airline or refer to its website for detailed information regarding its checked baggage policies. On average, international flights from the USA allow one piece of checked luggage, not exceeding 50 pounds, plus a carry-on piece not exceeding 15 pounds; however, we always recommend that you check your airline's policy just before departure, as luggage limitations are always subject to change. There may also be luggage and weight restrictions for your destination and that information will be forwarded to you with your pre-departure material and also listed on your final documents.

LUGGAGE ALLOWANCES ON INTERNAL FLIGHTS: Your journey includes internal flights aboard light aircraft which are designed with a maximum luggage allowance; this is closely monitored by the flight operators for safety reasons. You are allowed one carry-on and one piece of luggage, total weight: **33 lbs.** (15 kgs.) per person including the camera equipment. Further, only soft-sided duffel bags are accepted, **without wheels**, as they stow best in vehicles and airplanes with limited space.

PERSONAL WEIGHT ALLOWANCES ON INTERNAL FLIGHTS: Your journey includes internal flights aboard light aircraft which are designed with a maximum body weight and luggage allowance; this is closely monitored by the flight operators for safety reasons. If your personal weight exceeds **85 kilos (187 lbs.)** it may be required to purchase an extra seat and your Classic Escapes Journey Manager will contact you should this be necessary.

AIRLINE CLAUSE: The airlines concerned are not to be held liable for any act, omission, or event during the time the passengers are not on board their planes or conveyance. The passengers' tickets in use by the airline or by other carriers concerned when issued shall constitute the sole contract between the airlines and the purchaser of these tickets and/or passengers.

DELAYS: We cannot be held liable for any delays or additional costs incurred as a result of airlines not running to schedule. Any additional land or air fees imposed on account of airline delays will be borne by the traveler.

TRIP DETAILS

ACCOMMODATIONS: You will marvel at the wonderful accommodations provided throughout your tour. All rooms have private bathroom facilities and air conditioning and/or fans, unless otherwise specified. All rates are based on double occupancy. Most rooms are twin-bedded, but king-size beds are occasionally available and should be requested in advance. Accommodations listed in this itinerary are correct at time of writing, but on rare occasions may be substituted for a different property of comparable quality.

MEALS: All meals as specified in the itinerary. Please notify us if you have special dietary needs or requests, and we will do our best to accommodate.

WATER: It is always advisable to drink bottled and/or filtered water when traveling overseas. Safe drinking water will be provided to travelers free of charge in the vehicles and during meals.

PHOTOGRAPHY: The Company reserves the right without further notice to make use of any photograph or video taken on the tour by our photographers without payment or permission. We guarantee that no photographs of a compromising nature will be used.

GUIDES: If one of Classic Escapes' guides are unable to take a trip due to circumstances out of our control (i.e., illness, etc.), we reserve the right to substitute with another guide.

TOUR ITINERARY: To the best of our knowledge the itinerary is correct at the time of printing. We cannot be held responsible for any inaccuracies or changes that may occur after printing.

HEALTH AND SPECIAL REQUIREMENTS: You must have the proper immunizations and health screenings and required documentation of such immunizations and screenings before travel. It is your responsibility to ensure you are aware of any health requirements, health advisories, or health travel restrictions applicable to your travel destinations and to ensure that you carry all necessary vaccination documentation. Classic Escapes is not responsible for providing you with this information. Travel carriers and local authorities at travel destinations may require specific testing prior to boarding and/or upon arrival at your destination, including, but not limited to, a temperature check as a result of the COVID-19 pandemic. You may be denied entry onto your carrier and/or entry upon arrival at your destination or be required to self-quarantine at your destination and upon your return to the United States. You must comply with local government regulations. Any additional costs are your responsibility. Check the State Department Web site <http://travel.state.gov>, for relevant information relating to travel to specific destinations, and the Center for Disease Control <http://wwwnc.cdc.gov/travel/> relating to health issues related to travel.

You must be in good physical and mental health. It shall be your duty to inform us in case you have any medical condition that may affect your ability to enjoy and pursue fully the services of Classic Escapes. By registering for a Classic Escapes service/program, you certify that you do not have any mental, physical, or other condition or disability that would create a hazard for yourself or others.

COVID-19 ACKNOWLEDGEMENT

In order to participate in one of our tours, travelers must certify that they have not recently been treated for, nor are aware of any physical or other condition or liability that would create a hazard to themselves or other members of the tour and agree to comply with all health protocols as directed by Classic Escapes and their representatives during their journey. Travelers must maintain suitable physical distancing and frequently wash or sanitize hands throughout their journey. Travelers are required to wear masks in vehicles, indoor areas, any outdoor areas where physical distancing is not possible and in accordance with local regulations. Noncompliance with these procedures will result in the suspension of the journey. Travelers voluntarily assume all risks and related expenses in the event that they or any member of their travelling party require testing, quarantine or become infected with COVID-19.

TRAVEL INSURANCE: For your protection, we strongly recommend that you purchase trip cancellation and travel accident insurance. However, no representation or description of the insurance made by Classic Escapes to you constitutes a binding assurance or promise about the insurance. Classic Escapes is not an insurance company and has no responsibility for the submission, payment, or adjustment of any insurance claims. Any insurance claims that may fall under the relevant travel insurance policy must be submitted to the insurance company identified in the policy. We recommend the following service – please visit the website to enroll:

<http://www.travelguard.com/classicescapes/>. Any questions about what travel insurance does or does not cover should be addressed directly to the travel insurance company, Travel Guard at 1-866-385-4839 and reference ARC #71298. If you decline insurance coverage, you will personally assume full responsibility for any financial loss associated with your travel arrangements, and you could lose your travel investment and/or have to pay more money to correct the situation. THE PURCHASE OF TRAVEL INSURANCE IS HIGHLY RECOMMENDED ON ALL TRIPS.

EMERGENCY EVACUATION COVERAGE: For the convenience of our travelers, Classic Escapes provides a complimentary Medical Insurance Plan during your trip via Travel Guard Group, Inc. This includes:

- Emergency evacuation insurance up to \$100,000.
- Up to \$25,000 medical expense and up to \$500 dental expense coverage subject to the terms and limitations of the insurance policy.
- 24-hour worldwide travel and medical assistance.

Medical Plan (926801)

Please click here to view complete coverage of details.

https://webservices.travelguard.com/Product/FileRetrieval.aspx?CountryCode=US&StateCode=AL&ProductCode=926801&PlanCode=NW&FileType=PROD_PLAN_GM

TERMS & CONDITIONS

TOUR OPERATOR: Classic Escapes acts as a tour operator/travel agent only. Classic Escapes does not own, operate, manage, or control any independent suppliers of services and is not liable for their acts or omissions. Classic Escapes' obligations to you are to make travel bookings on your behalf and to arrange relevant contracts between you and other travel service providers. We have no responsibility for these services, nor do we have the authority to make any warranty or representation regarding their standard. Requests cannot be guaranteed. All bookings are subject to the terms and conditions and limitations of liability imposed by these travel service providers. You understand that your legal recourse is against the specific provider, not Classic Escapes. Conditions can change rapidly in a country at any time. It is your responsibility to check the USA Government Travel advisories for your intended destination at <https://travel.state.gov/content/travel.html>.

RESPONSIBILITY OF THE COMPANY: We always do our best to make sure your travel arrangements are satisfactory. However, Classic Escapes and its employees, shareholders, subsidiaries, affiliates, officers, directors, successors, agents, and assigns do not own or operate any third-party entity that provides goods and services for your travel, including without limitation lodging facilities, airline, vessel, motorcoach, or other transportation companies, local ground operators, providers, food service providers, etc. All such persons and entities are independent contractors and are in no way affiliated to Classic Escapes. We are not liable for any delays or additional costs incurred by the Traveler as a result of any actions or occurrences by any of the foregoing third party entities.

LIABILITY: Classic Escapes is not liable for any negligent or willful act or failure to act of any travel service provider or of any third party.

Because Classic Escapes does not have the right to control the operations of such travel service provider or any third party, you agree that Classic Escapes is not liable for any personal injury or property damage which may arise out of these services. Classic Escapes hereby disclaims any liability whether based on contract, tort, strict liability or otherwise, including without limitation liability for any direct, punitive, special consequential, incidental or indirect damages, in connection with the goods or services provided by any supplier booking through Classic Escapes, including without limitation liability for any act, error, omission, injury, loss, accident, delay or irregularity which may be incurred through the fault, negligence, willful acts, omissions or otherwise of such travel service provider or any third party, or their respective employees, agents, servants, or representatives, including, without limitation, their failure to deliver or their partial or inadequate delivery of services, their cancellation and refund policies, fuel increases, bankruptcy or cessation of operations and other matters outside of Classic Escapes' control, and you hereby exonerate Classic Escapes from any liability with respect to the same.

FORCE MAJEURE: Classic Escapes will not be in breach of these terms and conditions or otherwise be liable to you, for any failure or delay in performing an obligation under this Agreement that is due to any of the following causes, to the extent beyond its reasonable control: acts of God, accident, riots, war, terrorist act, illness, disease, epidemic, pandemic, quarantine, civil commotion, breakdown of communication facilities, including web host and internet service provider, breakdown or malfunction of equipment, destruction of or serious damage to facilities, natural catastrophes including, but not limited to extreme weather events, floods and volcanic eruptions, governmental acts or omissions, changes in laws or regulations, national strikes, fire, explosion, generalized lack of availability of raw materials or energy, and any other unforeseen circumstance which is beyond the control of Classic Escapes. **THE PURCHASE OF TRAVEL INSURANCE IS HIGHLY RECOMMENDED ON ALL TRIPS.**

REFUSAL OF SERVICE: Service providers reserve the right to refuse service to travelers at their sole discretion, including, without limitation, if the traveler: (i) lacks proper documentation for the country of destination; (ii) has a contagious disease; (iii) is under the influence of alcohol, drugs, or narcotics; and/or (iv) manifests disruptive and/or unruly behavior. Classic Escapes assumes no liability for the acts of the service provider in refusing service.

ELECTRONIC OR HANDWRITTEN SIGNATURE: Both parties agree that you may acknowledge and agree to these Terms: (i) electronically; (ii) by handwritten signature; (iii) by any other electronic means, including, without limitation, via email acceptance of these Terms; or (iv) by your implied consent deemed via your actions, which shall include without limitation the payment of the invoice in part or in full or your use of the services provided by Classic Escapes or any other travel supplier related to your booking. All such means will be deemed to constitute effective acknowledgement and execution of this Agreement and shall be sufficient to bind the parties to the terms and conditions of this Agreement.

RESERVATION OF RIGHTS: We reserve the right, in our sole discretion, to change these Terms and Conditions at any time. Updated versions of the Terms will be provided to you, will be posted on our website, and are effective immediately on posting.

GOVERNING LAW: The construction, validity, and performance of these Terms and any disputes between the parties shall be governed by and construed according to the laws of the State of New York, without giving effect to its conflict of law principles, and any federal laws applicable therein. Both parties submit to the exclusive jurisdiction of the courts of the State of New York with respect to any legal proceedings relating to these Terms.

RESERVATION FORM:

LINCOLN CHILDREN'S ZOO ~ TANZANIA

23AFZ0614/LCZ

Enclosed is my deposit for \$ _____ (\$1,800 per person for the main trip, plus \$600 for the Zanzibar post extension, \$650 for the pre-extension) to hold _____ place(s) on the classic safari to Tanzania departing June 14, 2023. Cost is \$8,995 per person, double occupancy, land only. Estimated international air from Lincoln is \$2,490 per person, including departure taxes & fuel surcharges (As of October 7, 2021, subject to change).

Final payment due date is **March 11, 2023**

Please make check payable to CLASSIC ESCAPES, 191 W Poplar Street, Floral Park, NY 11001 OR

Charge deposit to: ☐ MasterCard ☐ Visa ☐ American Express ☐ Discover

(Credit Card Authorization form needs to be completed and returned to Classic Escapes via mail or fax to 718-204-4726)

Deposits can be made by credit card; however, **all final payments are required to be made by check or money order only.**

A copy of your passport must accompany this form to confirm reservation. Upon receipt of your signed reservation form, passport copy and deposit we will, subject to availability, reserve your spot on the tour. Passport must be valid for at least 6 months after the return of your trip and have four consecutive blank pages in the visa section

1) NAME (As appears on passport): ☐ Mr. ☐ Mrs. ☐ Ms. _____ DOB _____

Passport No. _____ Green Card No. _____ Expiration Date _____ Nationality _____

2) NAME (As appears on passport): ☐ Mr. ☐ Mrs. ☐ Ms. _____ DOB _____

Passport No. _____ Green Card No. _____ Expiration Date _____ Nationality _____

NAME FOR NAME BADGE IF DIFFERENT FROM ABOVE: 1) _____ 2) _____

STREET ADDRESS: _____

CITY: _____ STATE: _____ ZIP: _____

PHONES: HOME: () _____ OFFICE: () _____ MOBILE: () _____

E-MAIL ADDRESS: _____ FAX: () _____

☐ I certify that I have not recently been treated for, nor am I aware of any physical or other condition or liability that would create a hazard to myself or the other members of this tour.

☐ The two of us above are sharing a room and, where possible, would like a room with: ☐ ONE ☐ TWO Beds (Make one selection only)

☐ I am sharing with _____ (form sent separately)

☐ I need assistance in securing a roommate. I understand if Lincoln Children's Zoo or the tour operator cannot locate one for me by final payment date, I agree to pay the additional single supplement amount listed on the Journey at a Glance page.
I prefer to share with: ☐ Smoker ☐ Non-smoker

☐ I desire single accommodations, if available, and will pay the single supplement additional cost listed on the Journey at a Glance page

☐ \$599 per person for the Serengeti Optional Balloon Safari (as of October 7, 2021) and subject to change)

☐ \$450 per person for the Amboseli Balloon Safari (as of October 7, 2021) and subject to change)

☐ I/We wish to participate in the optional extension(s) at an additional per person cost of:

☐ \$2,795 for the Zanzibar post extension

☐ \$3,195 for the Kenya pre- extension

☐ Please make my/our round-trip air reservations on the group flights from Lincoln on Delta Air Lines.

☐ Please make domestic round-trip air reservations for me from my home city: _____ to connect with the group flights and let me know the additional cost.

☐ Please send me information on air upgrades for: ☐ Business/First Class (only one class - business/first - exists)

Airline Seating Preference ☐ Aisle ☐ Window Frequent Flier # _____

***We can request a seating preference on your behalf, however this is only a request and NOT guaranteed, as some seating assignments may be airport check-in only. Requests should be made in writing no later than 60 days prior to departure. Bulkhead and/or emergency row seats can only be requested at airport check-in on the day of departure. Also note that even if we do obtain your preferred seat, it is not guaranteed that the seat will be provided during check-in as there might be equipment changes that nullify our selection.*

☐ I/We will make own air arrangements and will provide you with an itinerary before trip departure.

All rates quoted are based on tariffs and value of foreign currencies in relation to the U.S. dollar in effect as of October 7, 2021 and are subject to change. Refund is made less any cancellation charges levied in accordance with the policy outlined in the accompanying Conditions of Travel. **WE STRONGLY RECOMMEND THAT YOU OBTAIN TRAVEL INSURANCE. RESERVATIONS ARE ACCEPTED SUBJECT TO TOUR CONDITIONS AND WILL BE CONFIRMED ONLY IF ACCOMPANIED BY COMPLETED FORM SIGNED BY THE TOUR PARTICIPANT(S).**

SIGNATURE: _____ DATE: _____

SIGNATURE: _____ DATE: _____

CLASSIC ESCAPES INC.

191 W Poplar Street, Floral Park, NY 11001

(We recommend that you keep a copy of your selections as noted above for your future reference)



191 W Poplar Street, Floral Park, NY 11001
T: (718) 280-5000; (800) 627-1244
F: (718) 204-4726
E: info@classicescapes.com

LINCOLN CHILDREN'S ZOO ~ TANZANIA
JUNE 14 TO 25, 2023

CREDIT CARD PAYMENT AUTHORIZATION

Please Note: If you wish to charge your deposit to Visa, MasterCard, American Express or Discover, this authorization form MUST be completed and returned to us along with your reservation form before we can process your application.

I authorize (Classic Escapes Inc.) to charge my VISA/MASTERCARD/DISCOVER/AMEX listed below:

Name appearing on credit card _____

Card number _____ Expiration date _____

Card Verification Number* _____ Card Type _____

Billing address of credit card _____

Amount of transaction _____

Services rendered/Items purchased _____

Phone number _____

Signature _____ Date _____

***How To Locate Your Card Verification Number:**

(Visa, MasterCard, Discover: Locate the credit card number on the back of the card above the signature box. Enter the 3-digit number which follows the credit card number. **American Express:** Enter the 4-digit number found directly above and to the right of the credit card number.)

I understand that all rates quoted on this tour I'm making a payment on are based on tariffs and value of foreign currencies in relation to the U.S. dollar in effect as of October 7, 2021, and are subject to change. Cancellations are only effective on receipt of written notification. The following per person fees are applicable on this tour:

- Up to 6 months prior to departure (December 16, 2022), \$300 per person administrative fee.
- 6 months to 96 days prior to departure (December 17, 2022 to March 10, 2023), \$300 per person administrative fee, plus \$500 non-refundable deposits given to suppliers.
- 95 days to 76 days prior to departure (March 11 to March 30, 2023), deposit is forfeited.
- 75 days to 60 days prior to departure (March 31 to May 15, 2023), 50% refund is possible.
- 59 days or less prior to departure (May 16, 2023), no refund is possible.

These cancellation fees are also in addition to any fees imposed by airlines.

PLEASE NOTE: At times, our bank requires photocopy of credit card (both sides) and driver's license or document showing signature of cardholder, in order to process the charge. While it is not required at this time that you include these materials with your deposit, if our bank requests it, we will contact you for these copies.